

Acknowledgements

All data presented here were collected by the author. Some of the examples shown were part of studies funded by the United States Federal Highway Administration, Pittsburgh Clean Cities, New York City Department of Transportation, Port Authority of New York and New Jersey, IdleAire Corporation, California Air Resources Board, and others. Some work has been done as portion of author's graduate studies. Part of the work, including compilation and preparation of this presentation, has been done at the Josef Božek II. Internal Combustion Engine and Automobile Research Center, funded by the Czech Ministry of Education, project no. 1M68407700002.

11th ETH Conference on Combustion Generated Nanoparticles

Zurich, 13th - 15th August 2007

Real-time, on-road measurements of diesel exhaust aftertreatment device PM removal efficiency

Michal Vojtíšek-Lom

Technical University of Liberec

Department of Vehicles and Engines, Faculty of Mechanical Engineering

Hálkova 6, 461 17 Liberec, Czech Republic, michal.vojtisek@tul.cz, tel. +420 774 262 854

Thomas R. Lanni

Bureau of Mobile Sources, Division of Air Quality

New York State Department of Environmental Conservation

Albany, New York, USA

(New York City measurements portion)

Background

Modern engines increasingly rely on the combination of electronic engine controls and exhaust aftertreatment devices to achieve low emissions.

Various deviations from “ideal operation” typically result in substantially higher emissions.

Small number of vehicles and small portion of total operating time have a disproportionately high contribution to the total emissions.

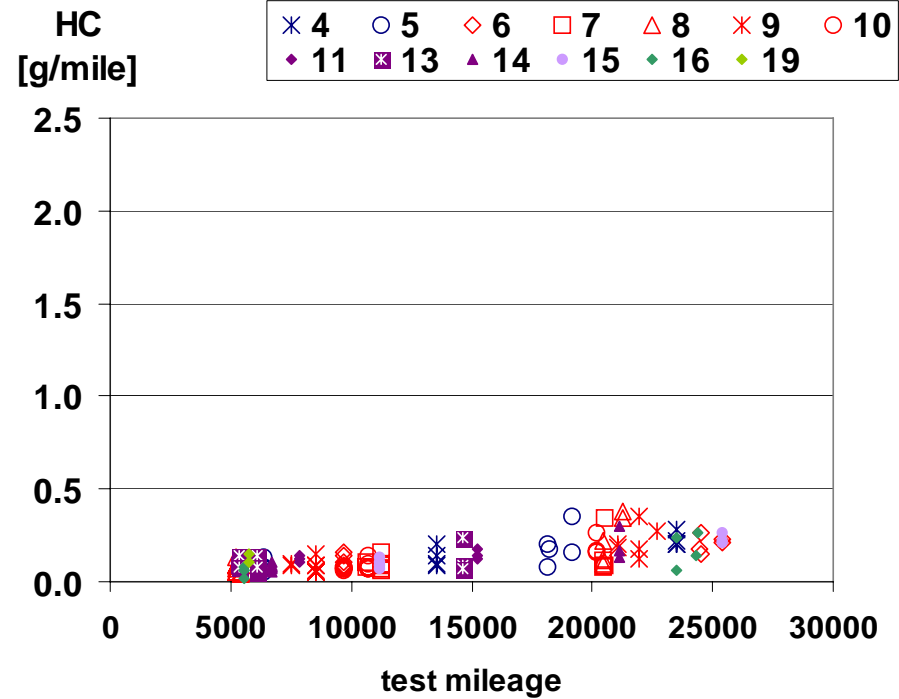
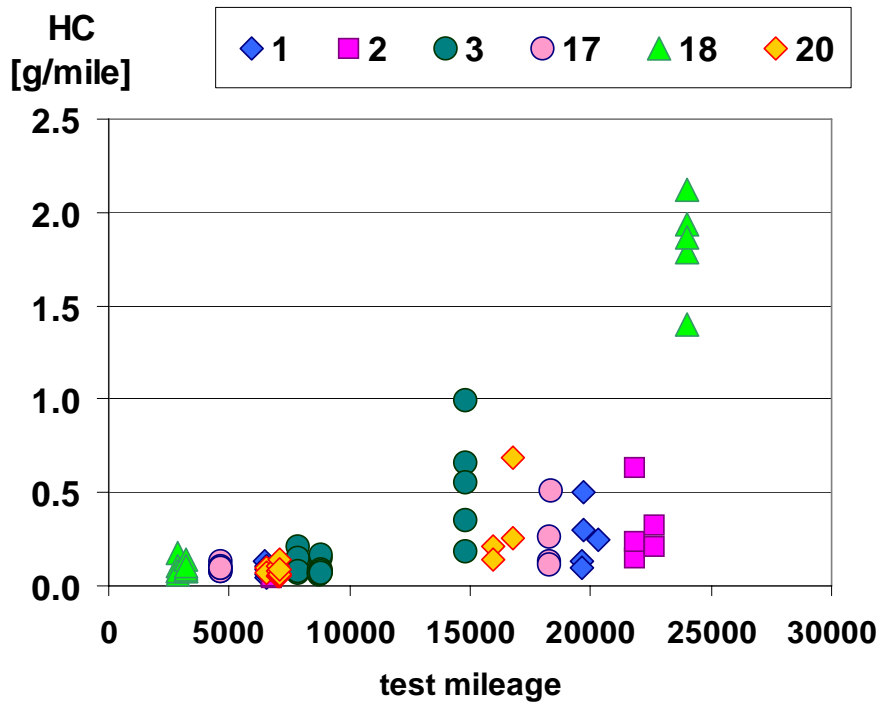
Example: On-road tests of CNG buses

(Pittsburgh, USA, 1996-99)



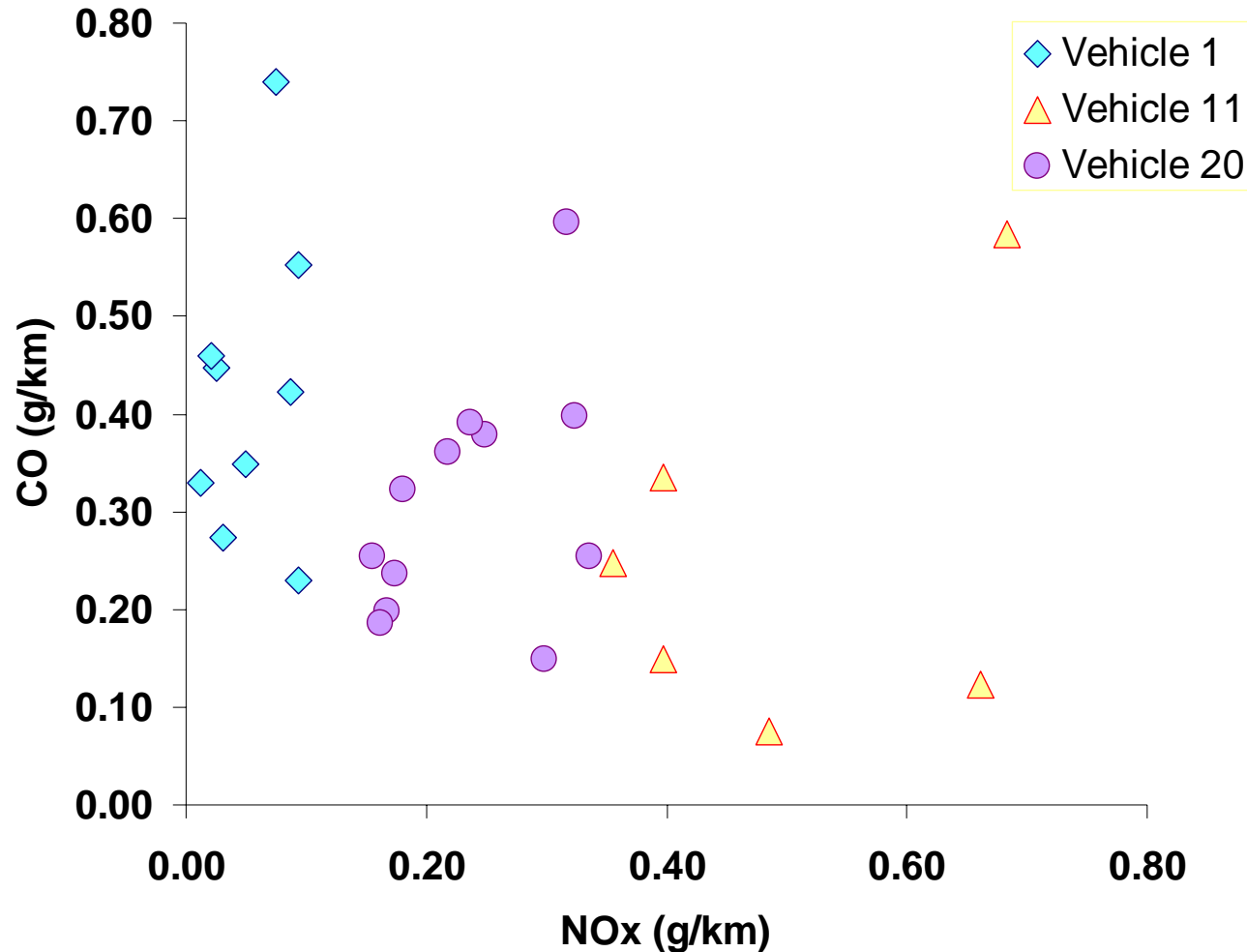
Example: On-road tests of CNG buses

HC emissions deterioration rates



Example: On-road tests of CNG buses

Differences among identical vehicles



Why on-road measurements?

When evaluating benefits of a fleet-wide deployment of a new technology, high emissions vehicles and high emissions episodes cannot be ignored as “outliers”, but must be characterized and accounted for.

On-road measurements using portable on-board systems allow for testing of a large set of vehicles under a wide range of operating conditions.

Measurements can be done during normal everyday operation of the tested equipment.

Evaluation of aftertreatment devices

Use one monitoring system. Run separate identical tests with and without aftertreatment, compare.

+ Relatively easy test

– Tests have to be repeatable

Real-time or proportional sampling instrumentation

Use two monitoring systems, one upstream, one downstream of the aftertreatment

+ Tests do not have to be repeatable

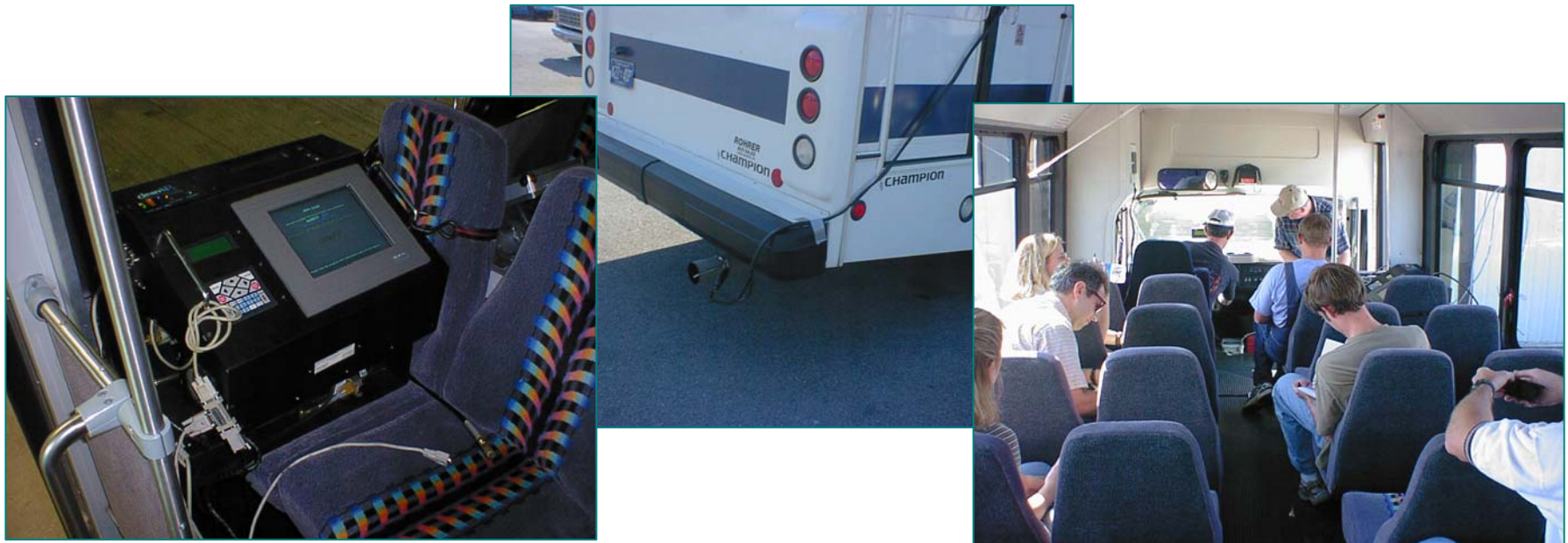
– More difficult realization of the test

Instrumentation has to measure in real-time (1 Hz)

Repeatability of on-road measurements

Instrumentation:

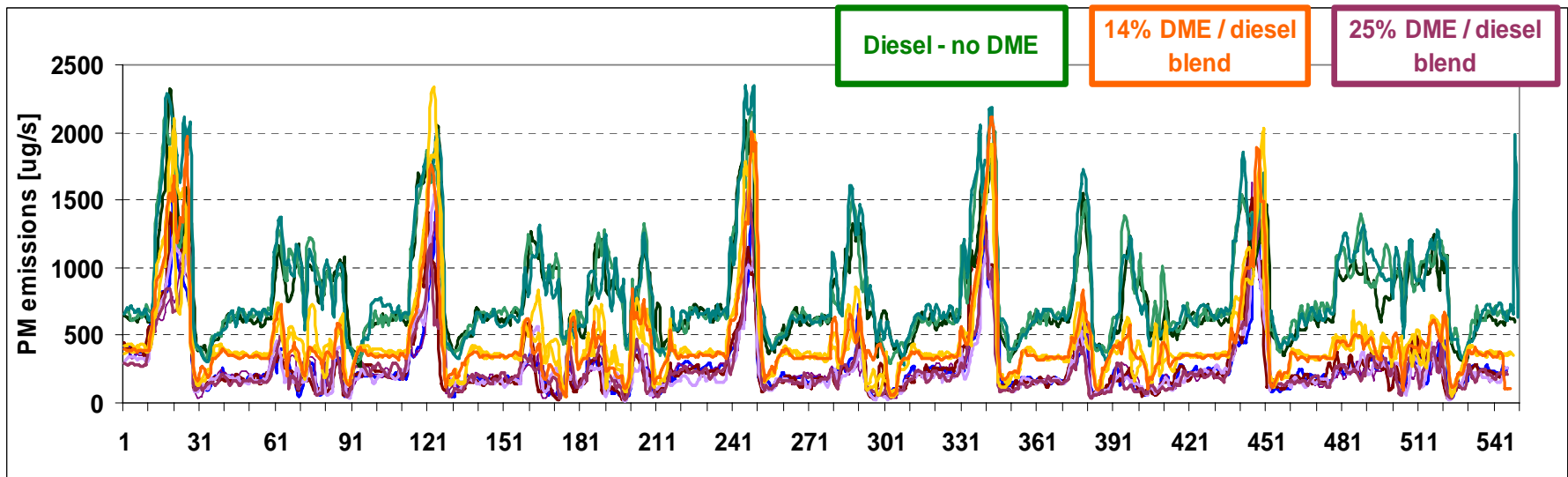
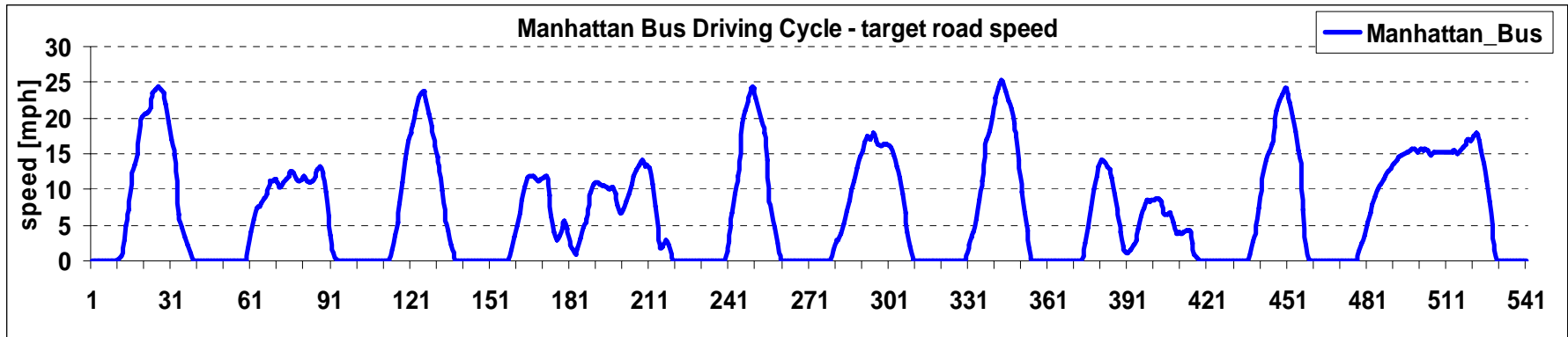
- Five-gas (HC, CO, NO, CO₂, O₂) “garage” analyzer
- Light scattering device for PM concentration measurements
- Sampling: No dilution, no heating of the line
- Exhaust flow: Computation based on engine rpm, intake air temperature and pressure, engine parameters and exhaust composition
- Second-by-second data



Vehicle: 1999 International 24-passenger bus, DT-444-E 145 kW, 7.3-liter V-8 electronically controlled direct-injection turbodiesel

On-road tests on a test track can be repeatable

Bus operating on different blends of diesel fuel and di-methyl ether (DME)
Emissions measured using Manhattan Bus cycle driven on a 1,6 km test track

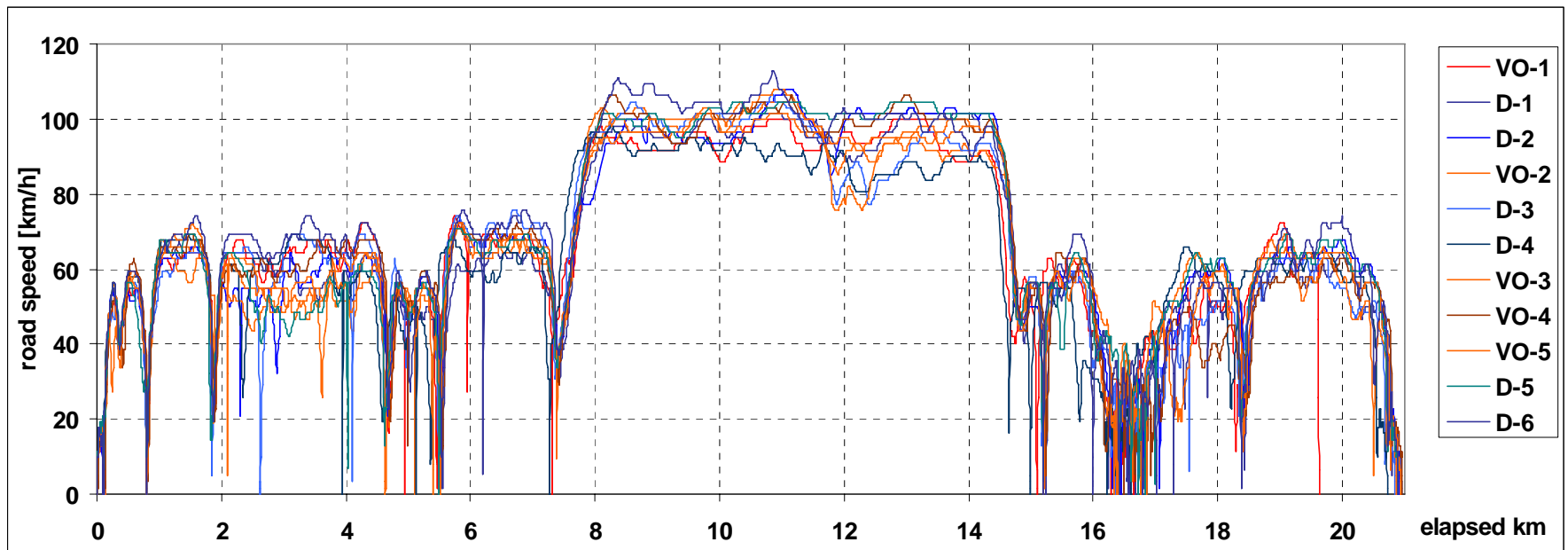


Test-to-test variance: < 10% for computed total PM mass

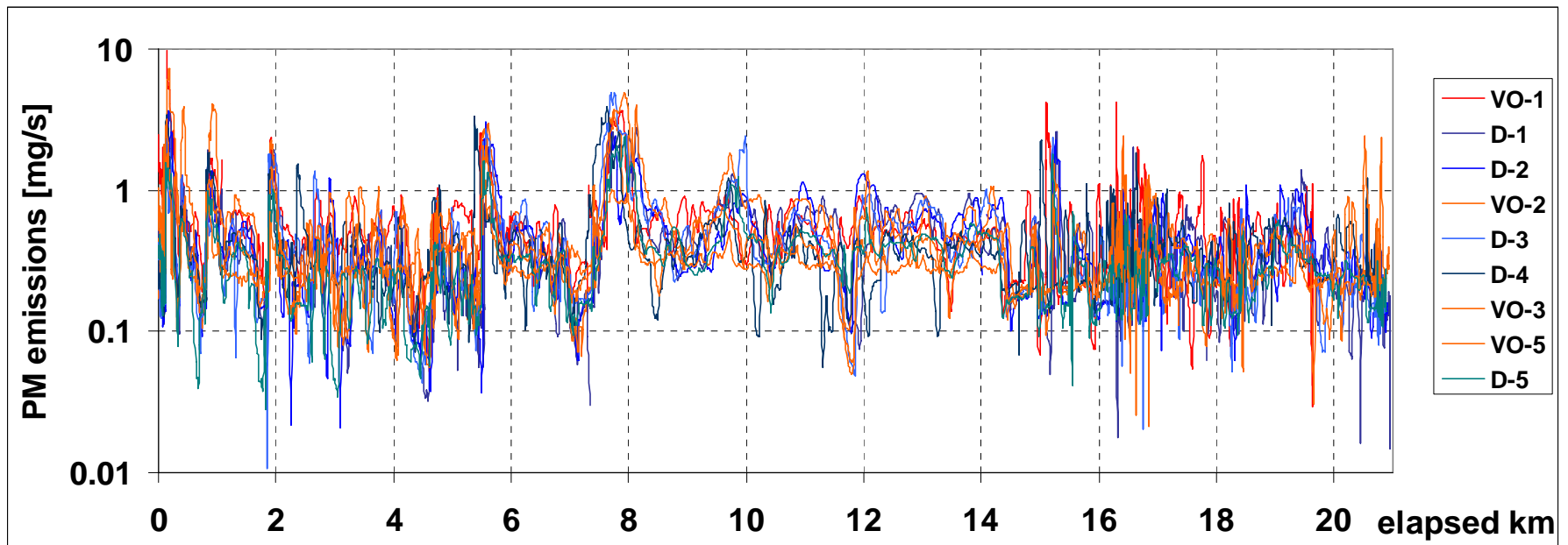
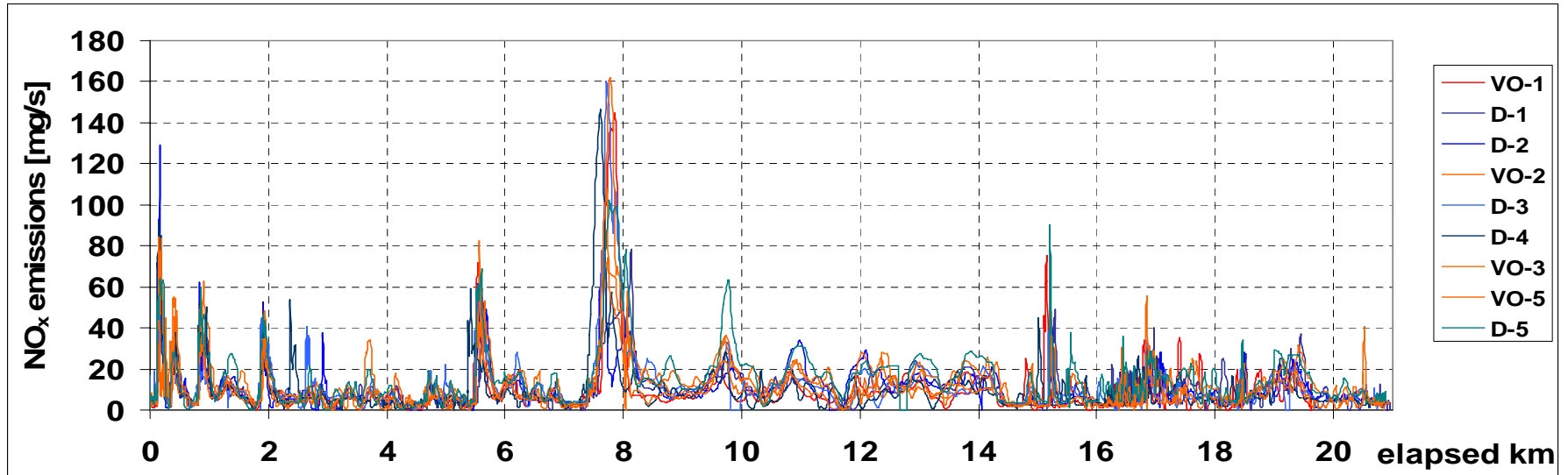
Measurements in ordinary traffic are poorly repeatable

Example: VW Golf / Jetta cars powered by diesel fuel and vegetable oil. Multiple runs along a 20,9 km suburban-highway-city route.

Unlike in laboratory tests, comparison is done on a distance basis (x-axis: distance from start of the test)



Example: VW Golf car powered by diesel fuel and vegetable oil.
Multiple runs along a 20,9 km suburban-highway-city route.



Simultaneous upstream-downstream sampling

More weight, higher power consumption, decreased system reliability

Impossible to sample from a laminar flow upstream of the aftertreatment due to exhaust system geometry of most engines

But: Most diesel particles $< 1 \mu\text{m}$; if sampling PM_{10} or $\text{PM}_{2.5}$, sampling error is relatively small compared to other factors

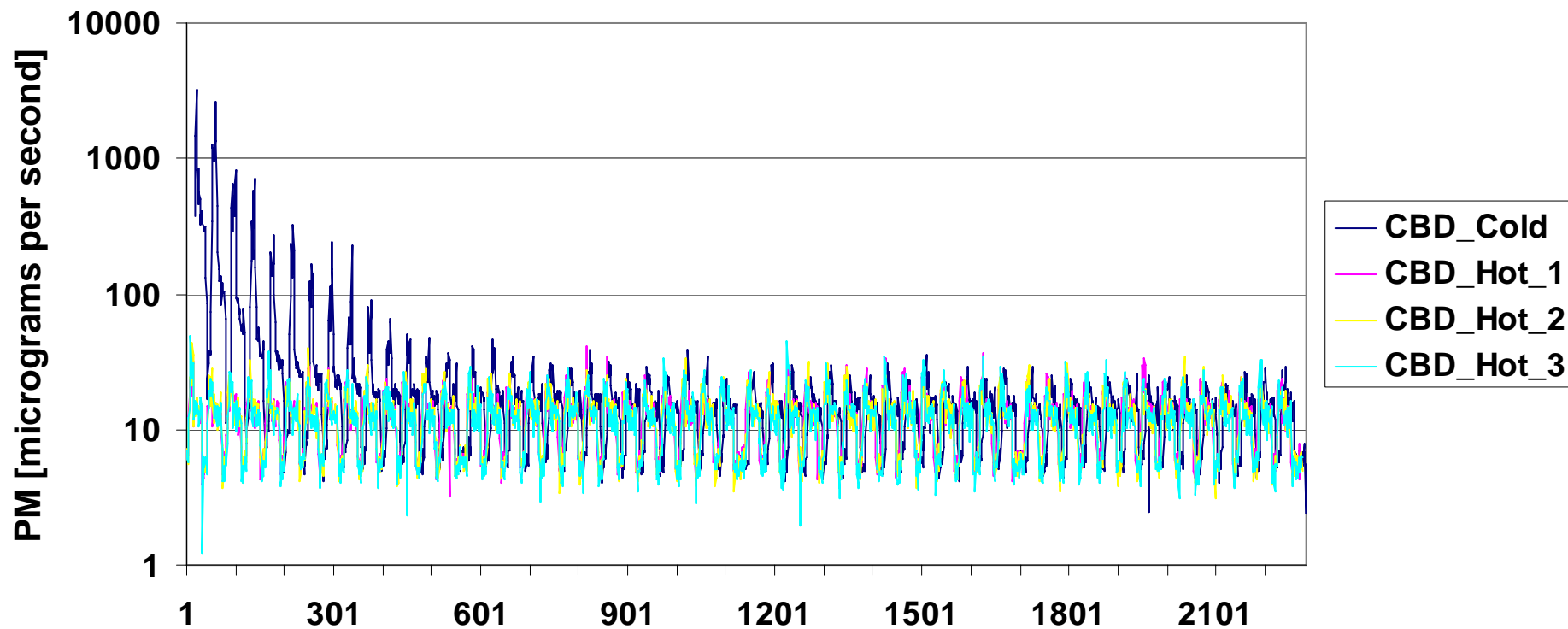
Pilot studies done using a simple light-scattering device

Simple on-board systems can be capable of repeatable measurements in the lab even at ~ 0.01 g/kWh levels (but no claims about accuracy)

2000 International 3400 truck, DT-466-E turbodiesel, CRT trap

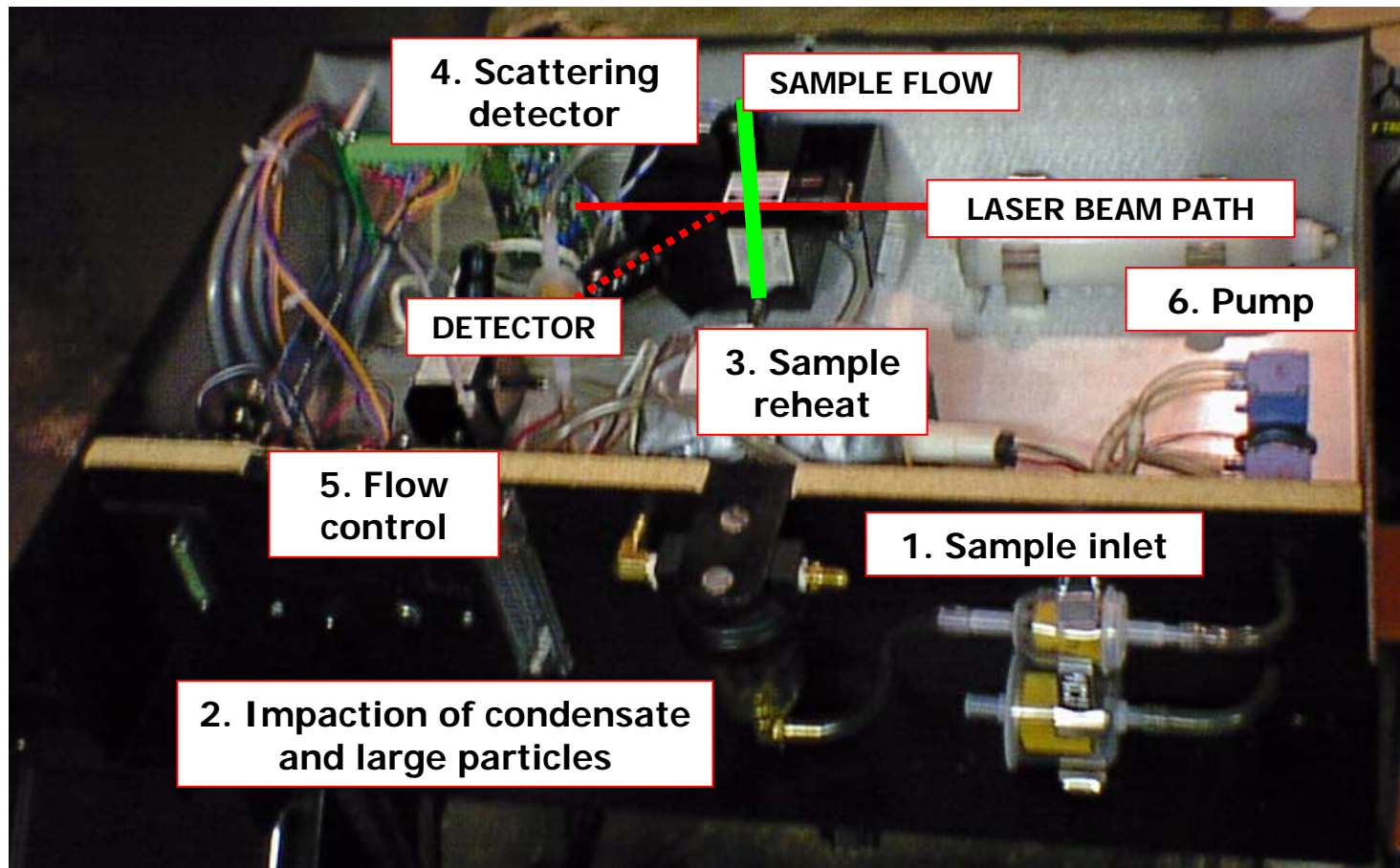
CBD cycle driven on a chassis dynamometer

PM concentrations measured with a light scattering device, exhaust flow computed



On-board PM concentrations measurement using a light scattering instrument

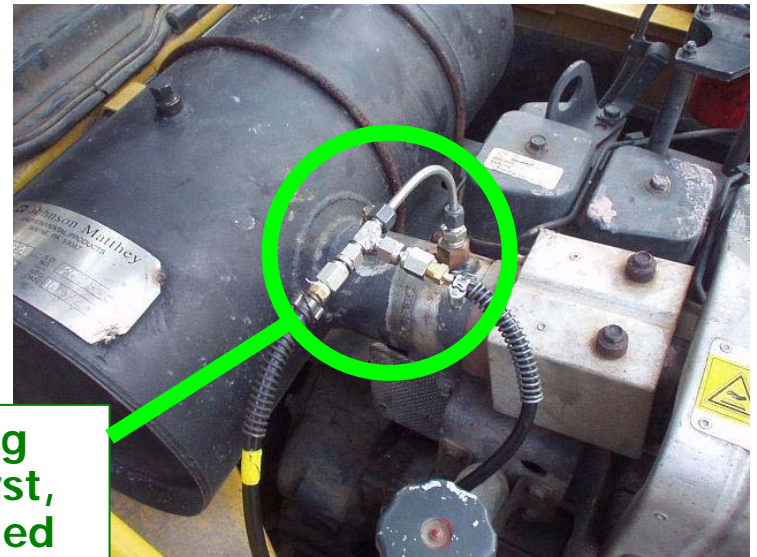
- Samples raw, undiluted exhaust from the tailpipe using 6 mm sample line
- Real-time measurements of PM scattering efficiency
- Robust, easy to use, low power consumption
- Data requires considerable interpretation



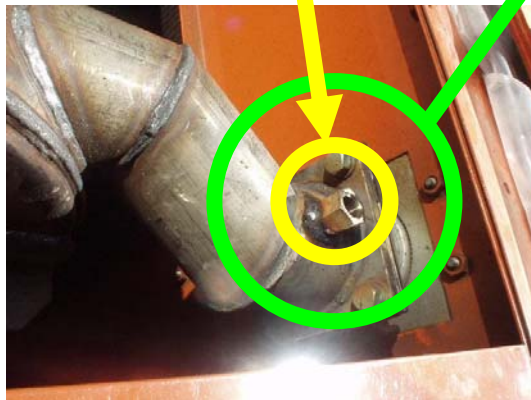
On-line diesel oxidation catalyst evaluation



Simultaneous
Upstream /
Downstream
Sampling
(2 monitoring
Systems)



Exhaust sampling
port before catalyst,
1/4" probe, unheated
line, no dilution



Exhaust sampling at
tailpipe
1/4" probe, unheated
line, no dilution

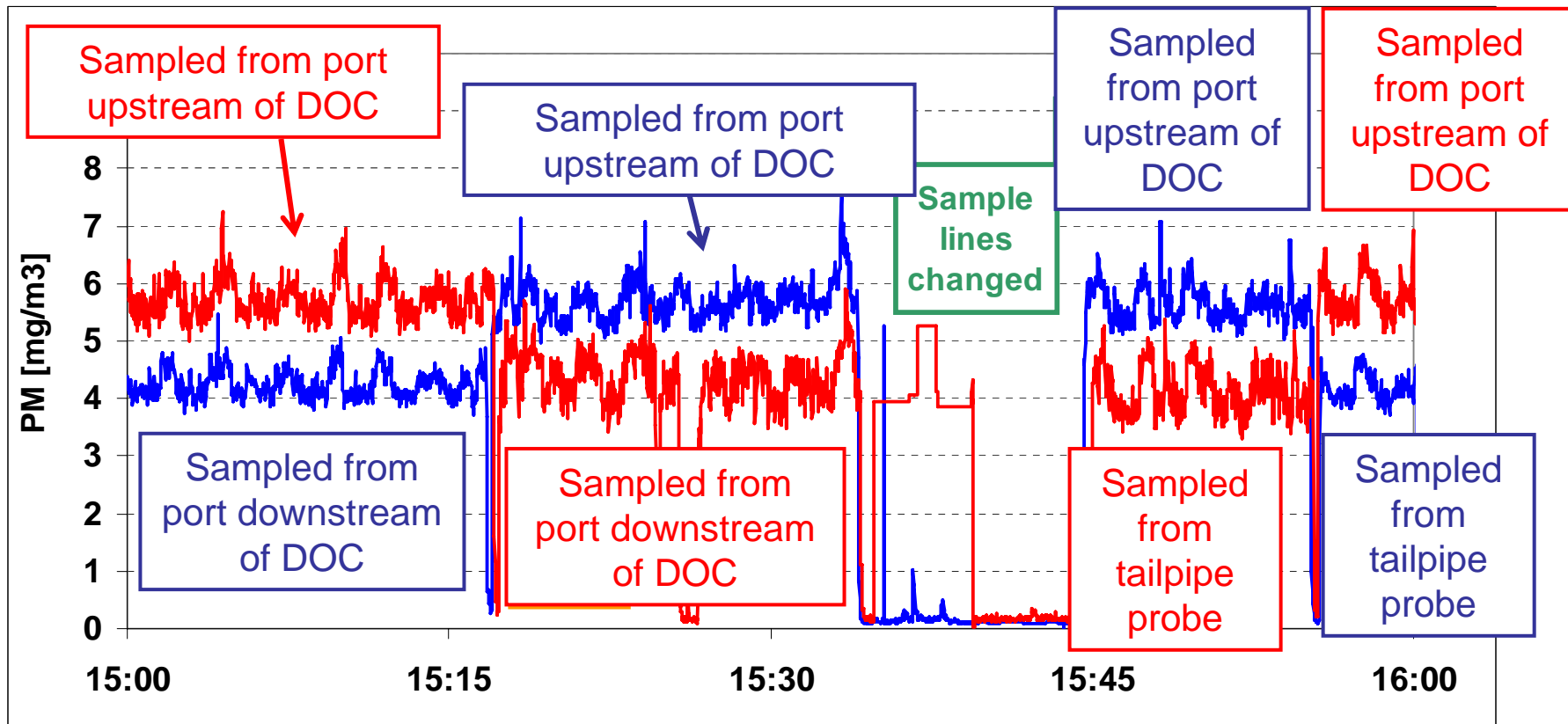


Construction equipment, World Trade Center, New York

On-line diesel oxidation catalyst evaluation

Three sampling locations: Identical sample ports upstream and downstream of DOC, ordinary probe at the tailpipe

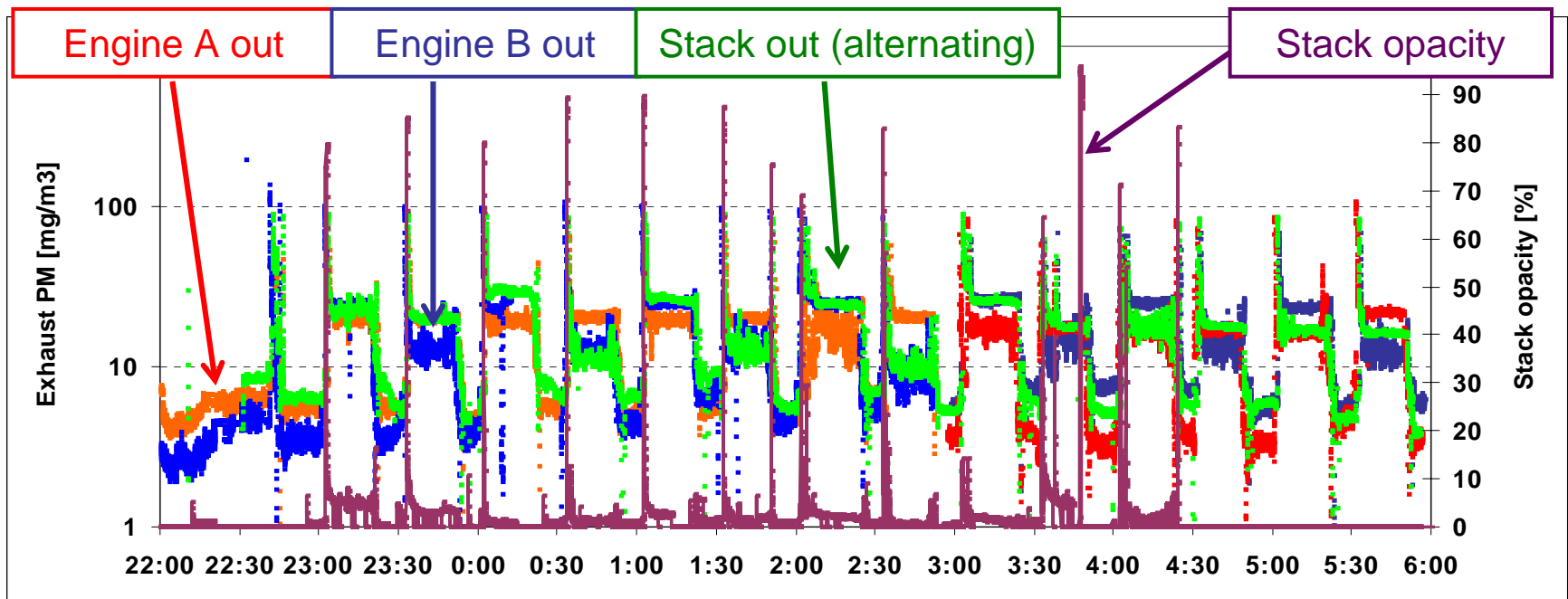
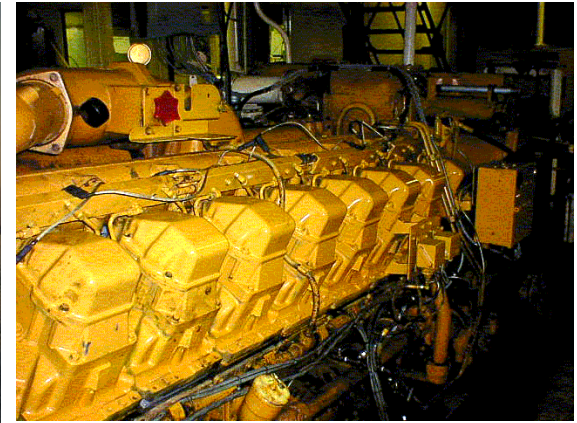
Two monitoring systems (light scattering device for PM concentrations)



(MQ 100 kVA electric generator, 6.8-liter, 135-hp John Deere engine)

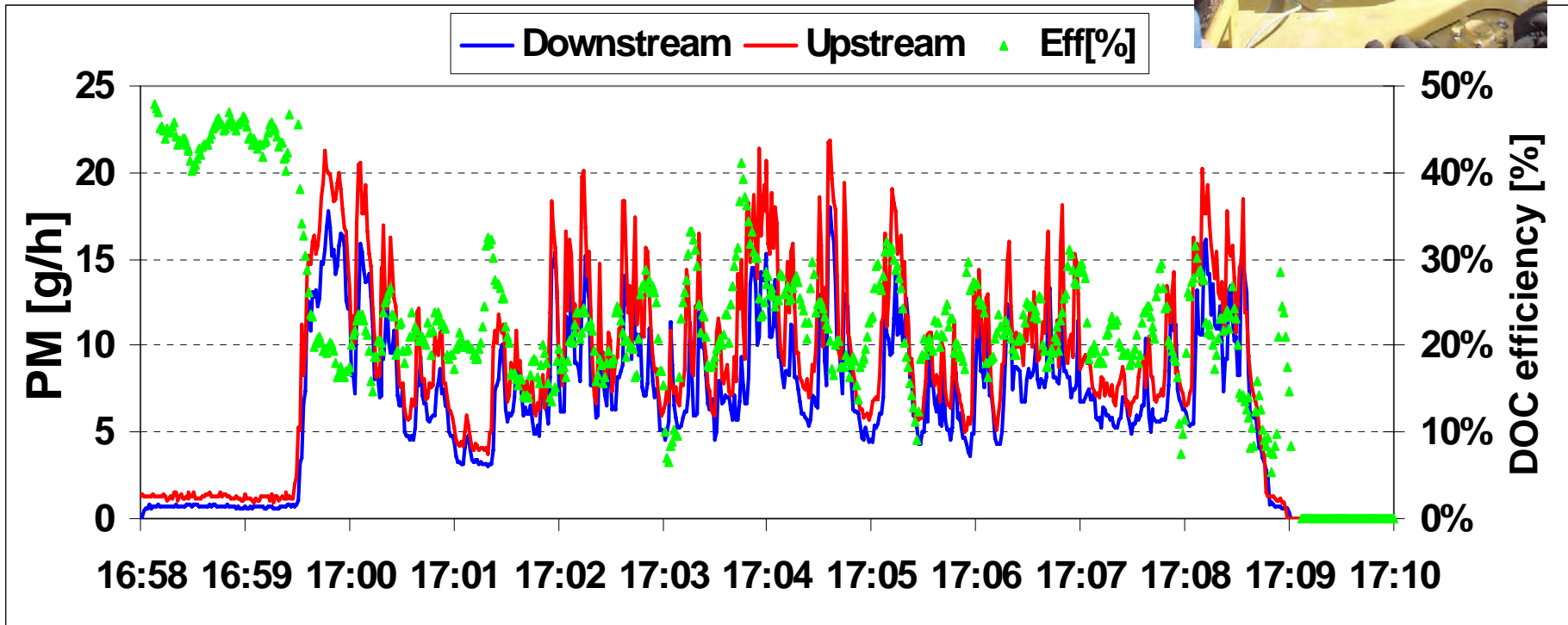
Engine-out vs. tailpipe-out: New York City ferries (Staten Island Ferry, Manhattan <-> Staten Island)

- True in-use testing
- 2 x Caterpillar 3516 V-16 1155 kW drive engines
- Baseline for biofuels and SCR evaluation
- Sampling at turbocharger outlet AND at stack end



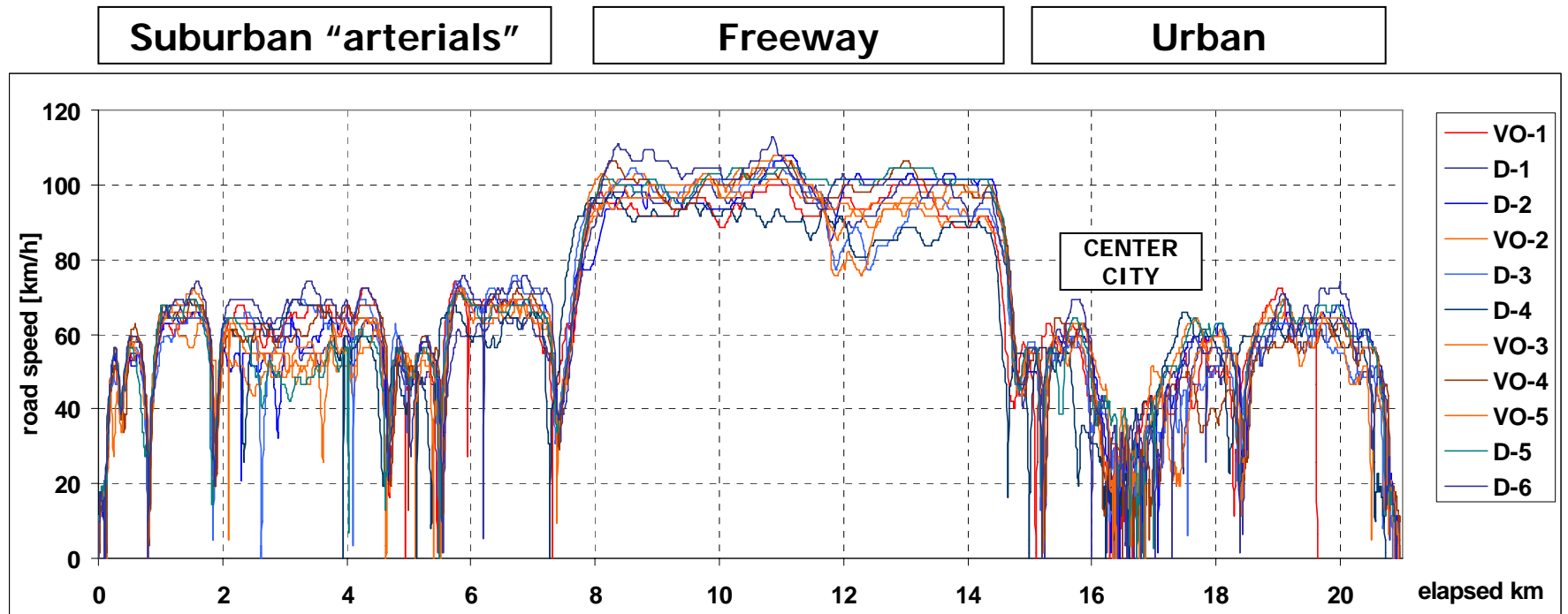
On-line diesel oxidation catalyst evaluation

- In-use emissions testing on construction equipment during regular operation at the World Trade Center no. 7 site, New York, NY
- Operation not repeatable and difficult to simulate
- Simultaneous upstream and downstream sampling



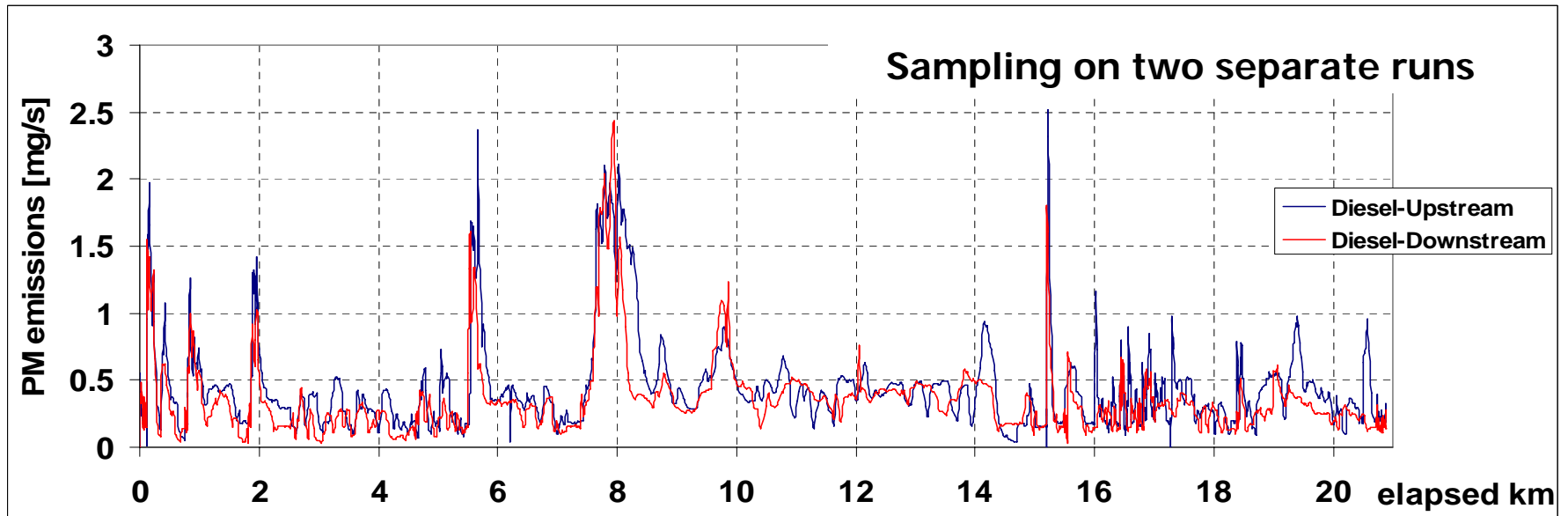
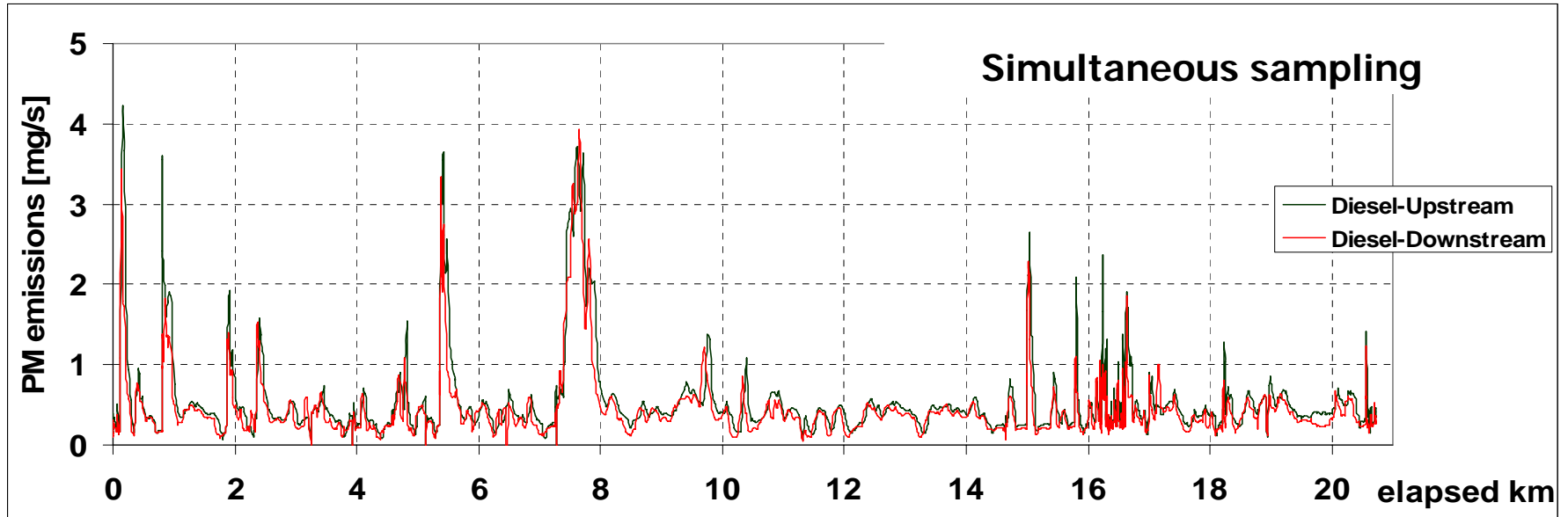
On-road emissions from recycled frying oil study

VW Golf / Jetta 1,9 TDI cars with GreaseCar vegetable oil conversion
Fuels: Highway diesel fuel and a mix of recycled frying oil from different sources
Vegetable oil heated to ~60 C fuel temperature at injection pump inlet
20,9 km suburban / highway / urban test route
Emissions measurements upstream and downstream of DOC
Data still being analyzed



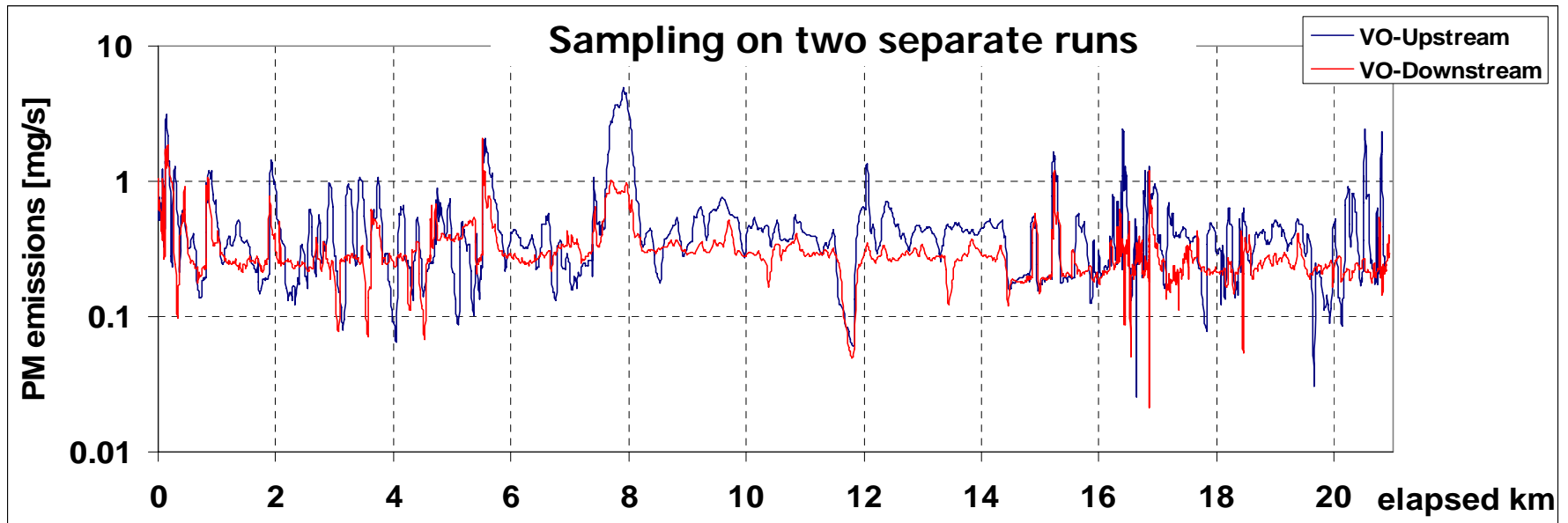
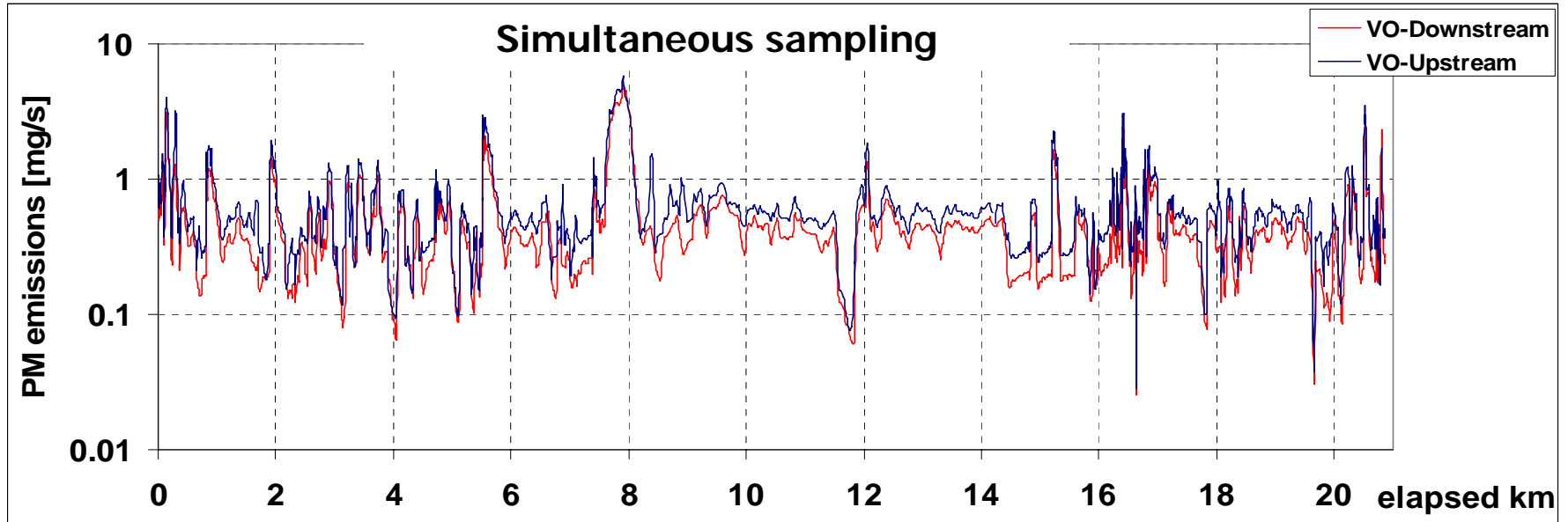
Passenger car DOC efficiency – diesel fuel

VW Jetta 1,9 TDI, 20,9 km test route in ordinary traffic



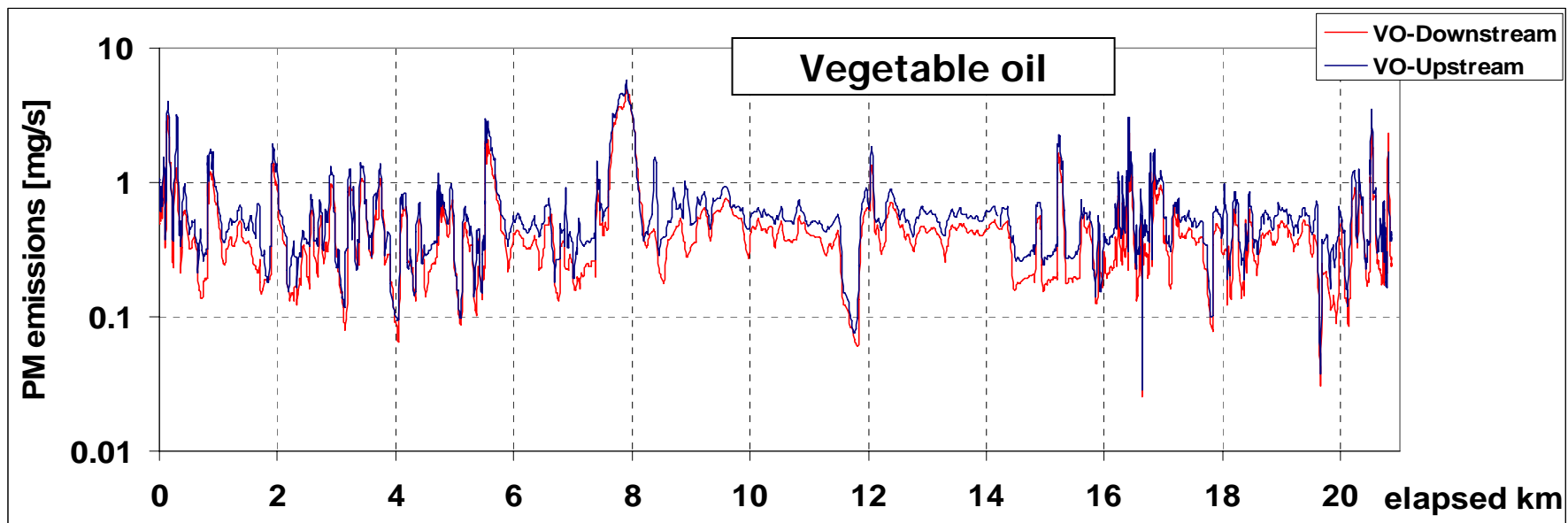
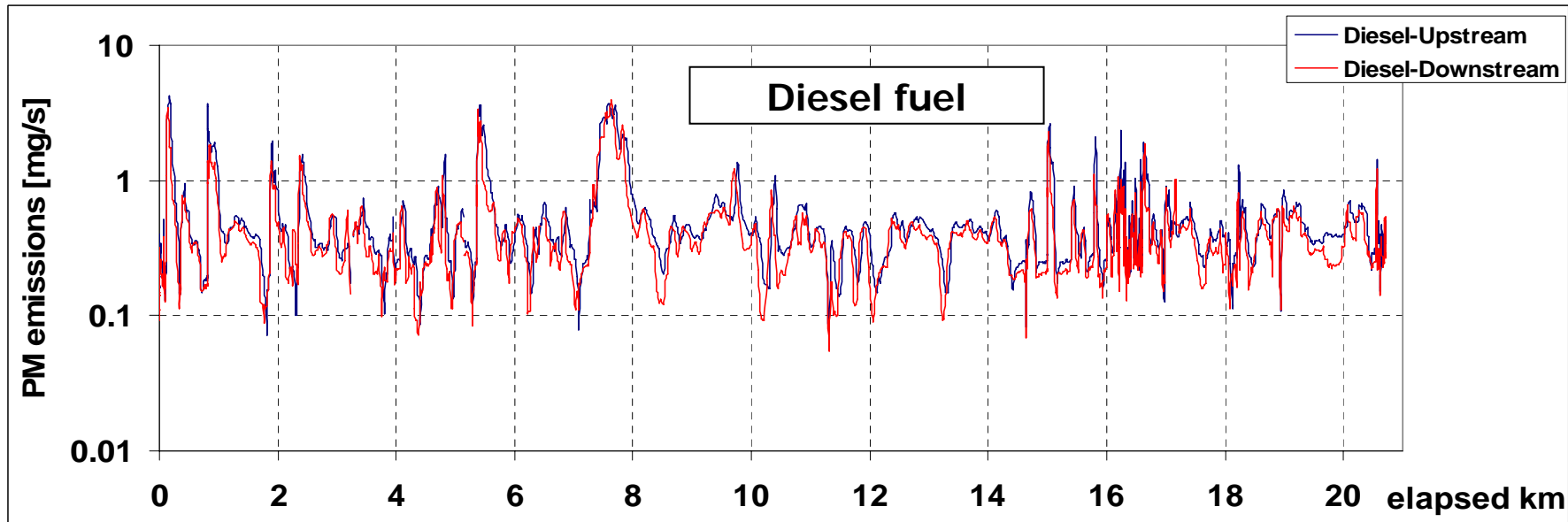
Passenger car DOC efficiency – vegetable oil

VW Jetta, 20,9 km test route in ordinary traffic



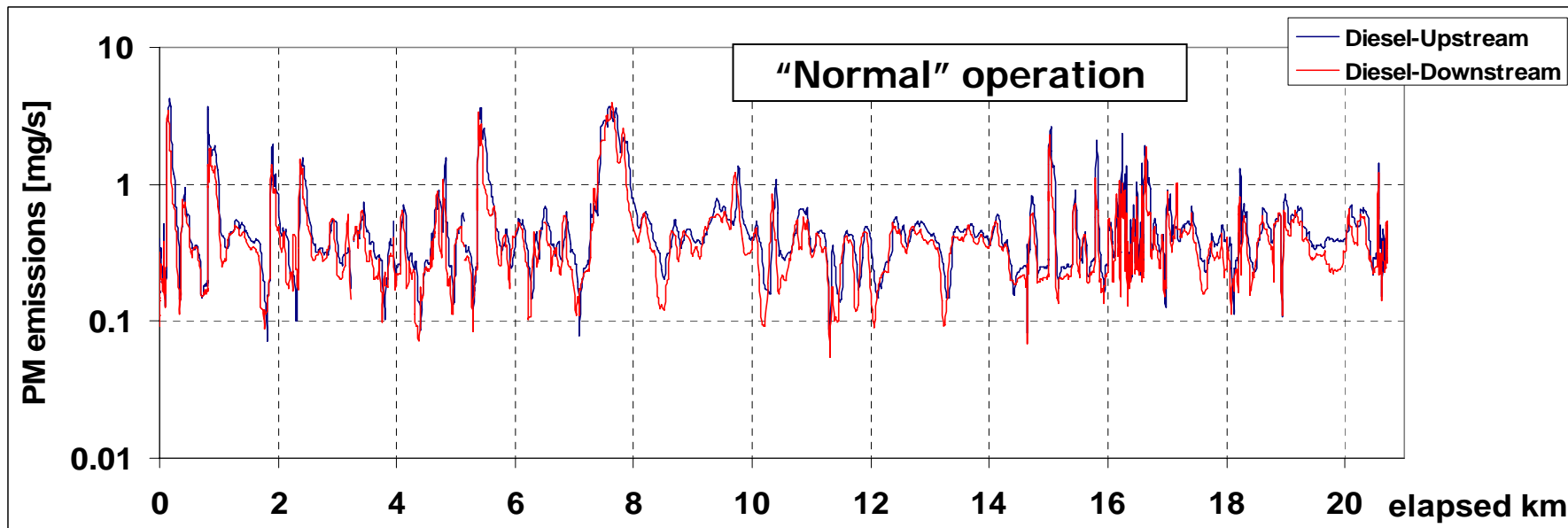
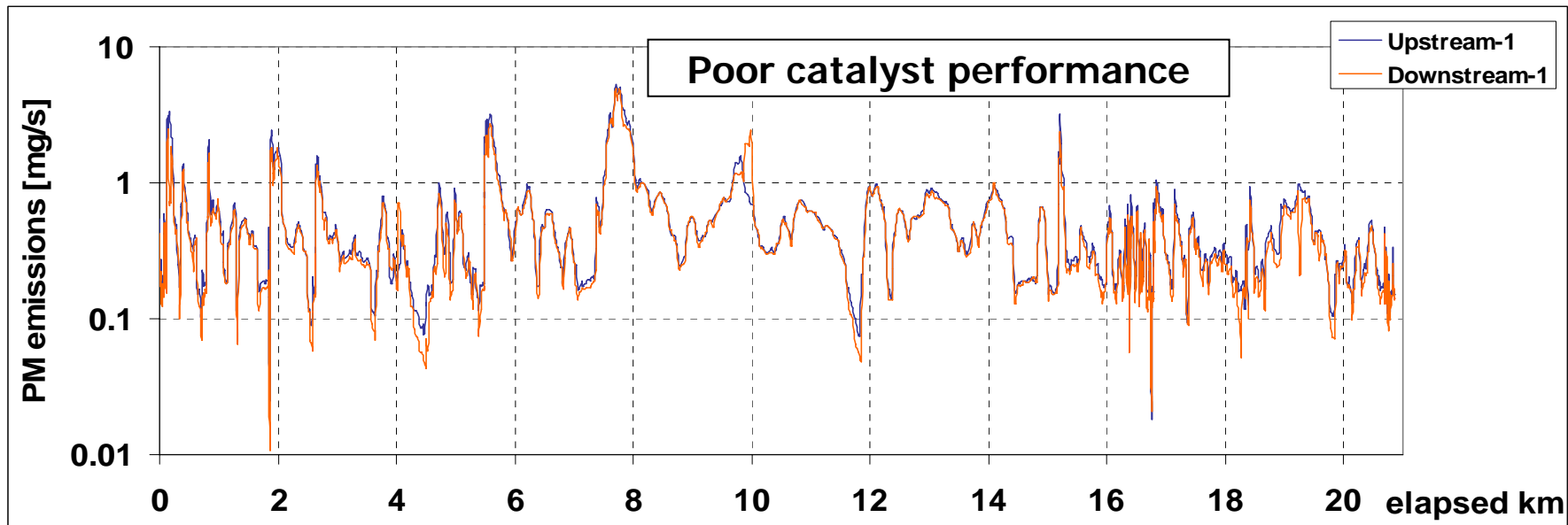
Passenger car DOC efficiency – diesel vs. vegetable oil

VW Jetta, 20,9 km test route in ordinary traffic



Passenger car DOC efficiency – difference in catalysts

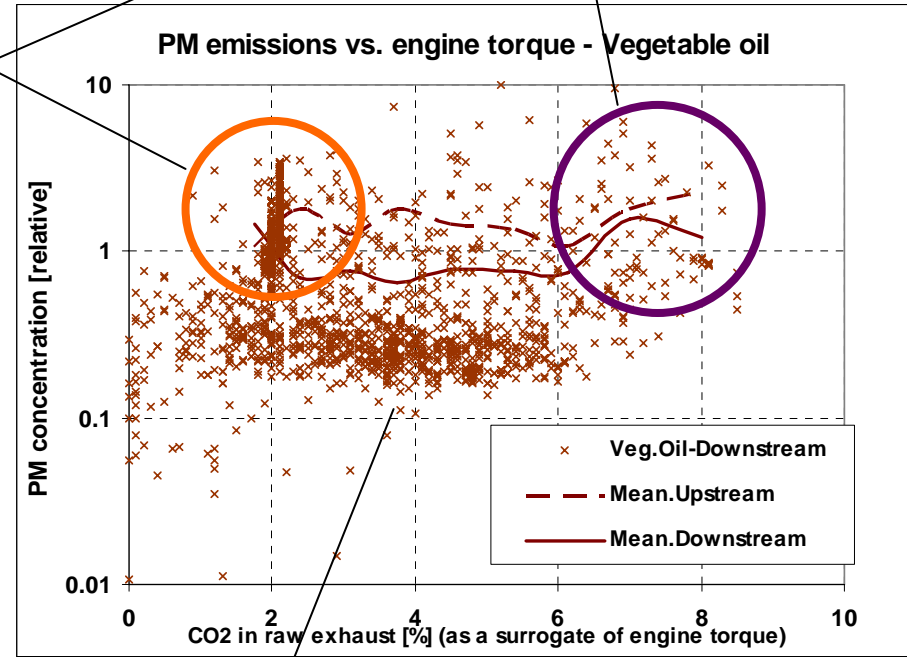
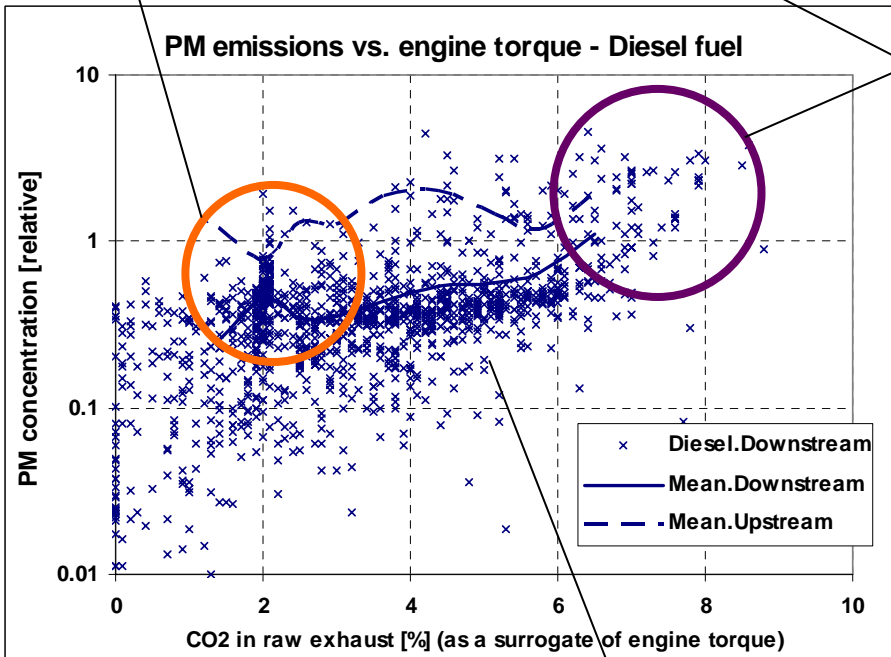
20,9 km test route in ordinary traffic



Passenger car DOC efficiency – diesel fuel vs. vegetable oil 20,9 km test route in ordinary traffic

Idle (also prolonged idling)
Low exhaust and catalyst temperatures
PM dominated by organics

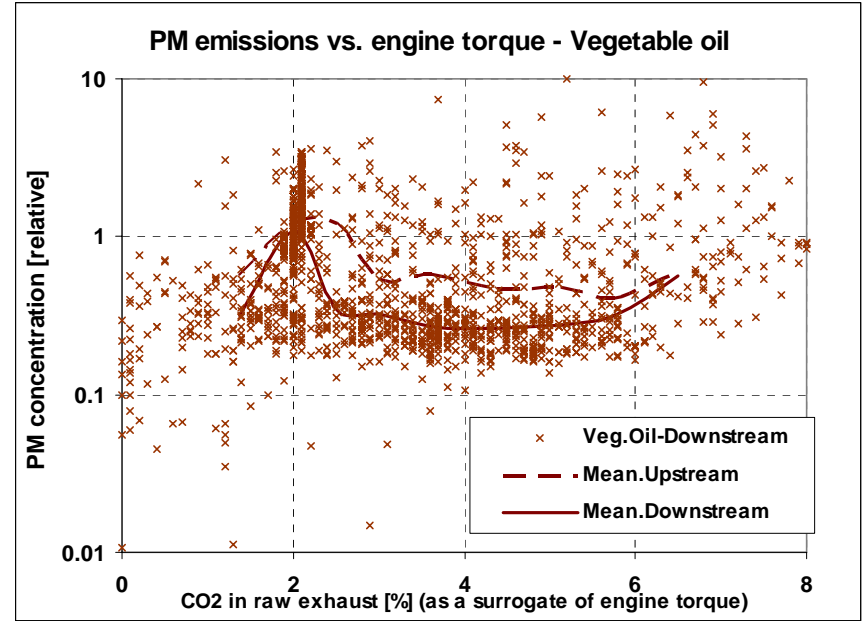
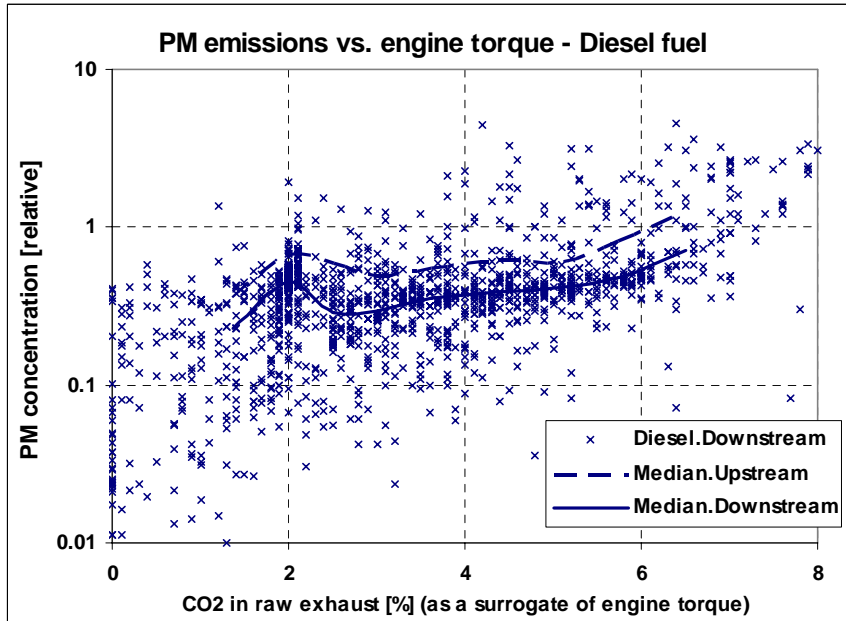
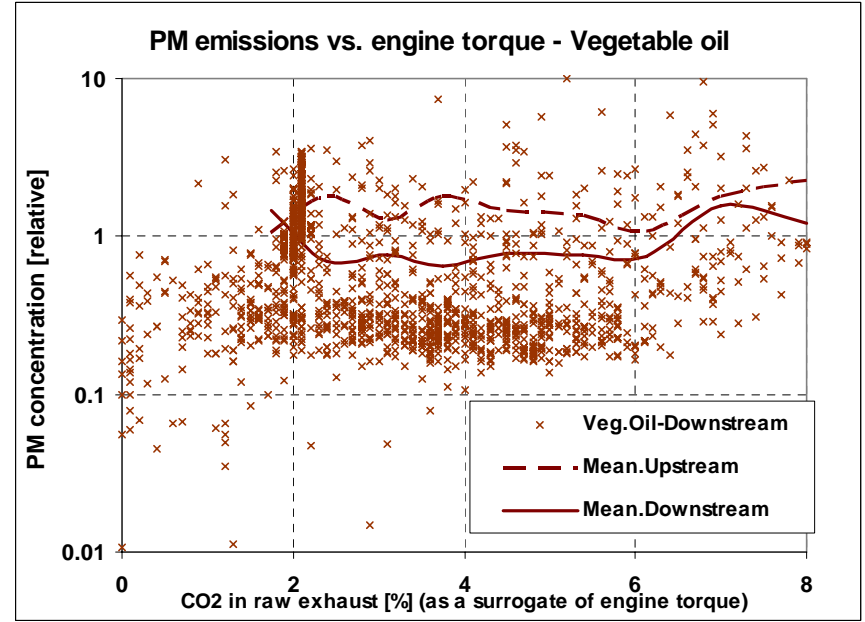
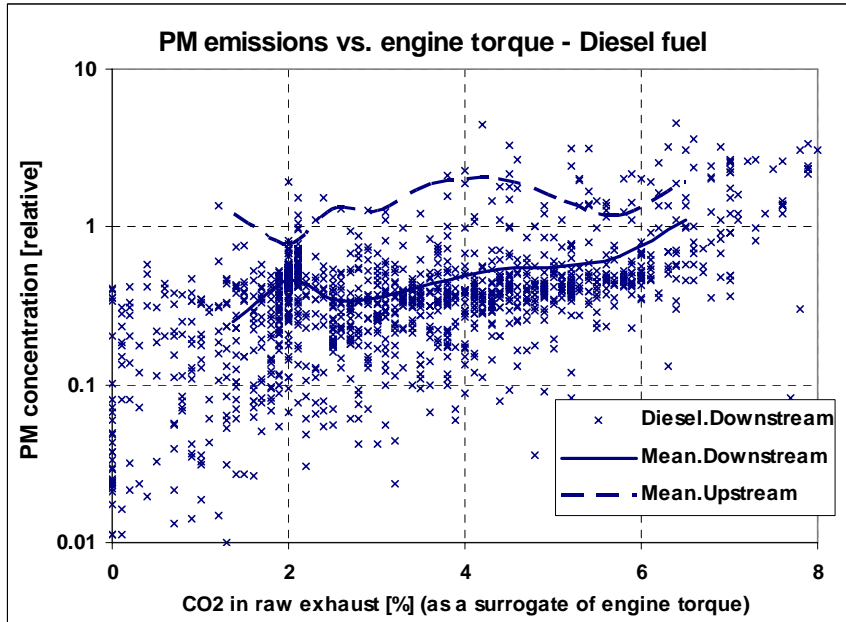
Transient high loads
Overfueling conditions
Relatively infrequent
PM dominated by soot



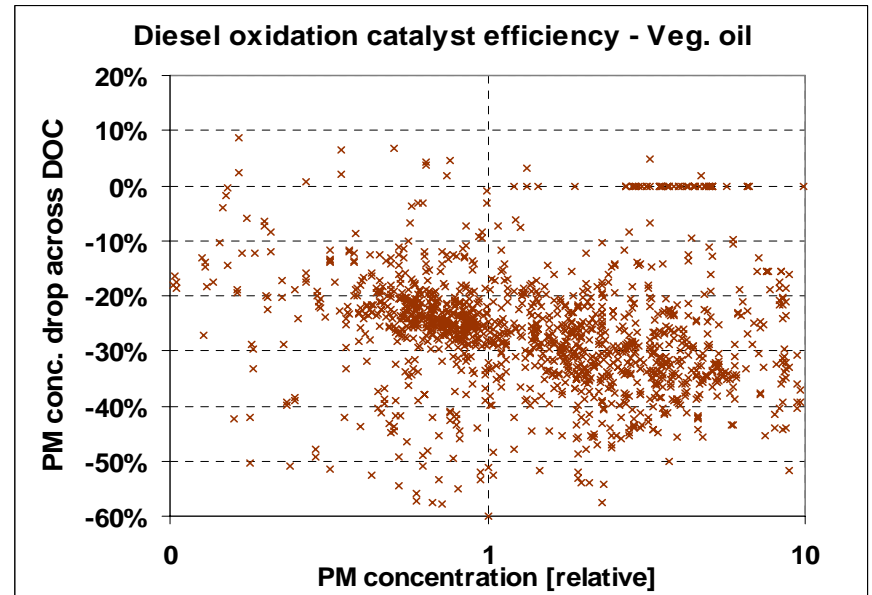
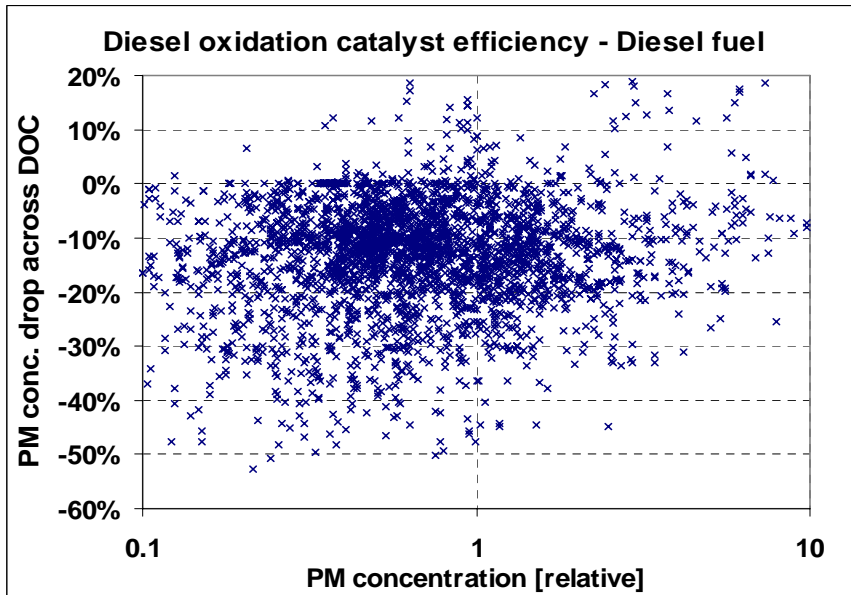
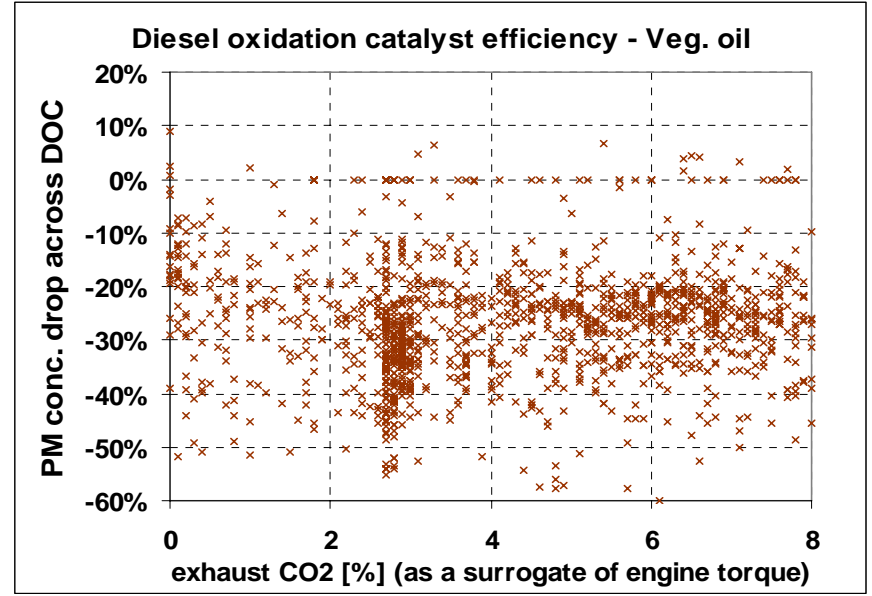
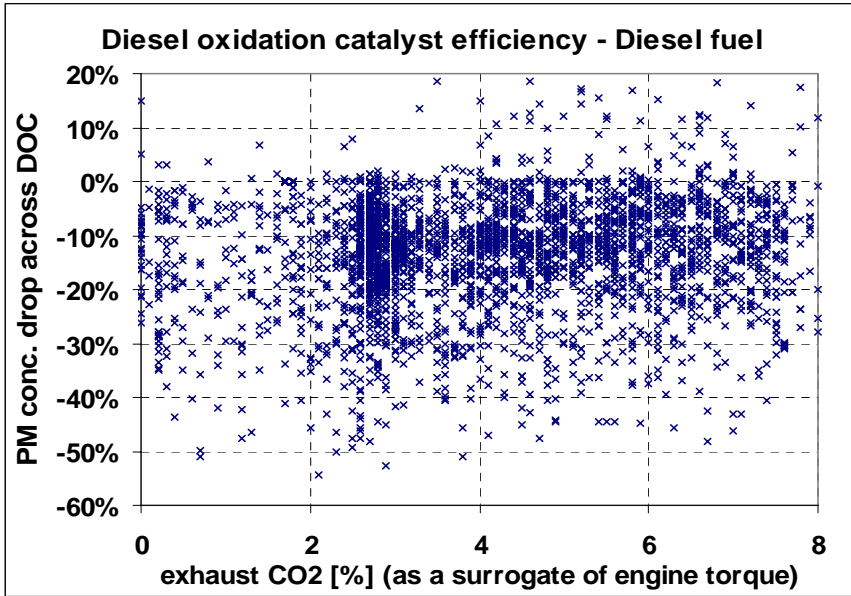
During bulk of the medium load operation, PM concentrations are lower for vegetable oil; but mean PM concentrations are higher, suggesting that a large contribution to the total comes from transients

Passenger car DOC efficiency – diesel fuel vs. vegetable oil

Mean vs. median values – median values suppress transients



Passenger car DOC efficiency – diesel fuel vs. vegetable oil



PM dynamics within the exhaust system

- Secondary growth of PM
- Deposition, storage and re-entrainment of PM

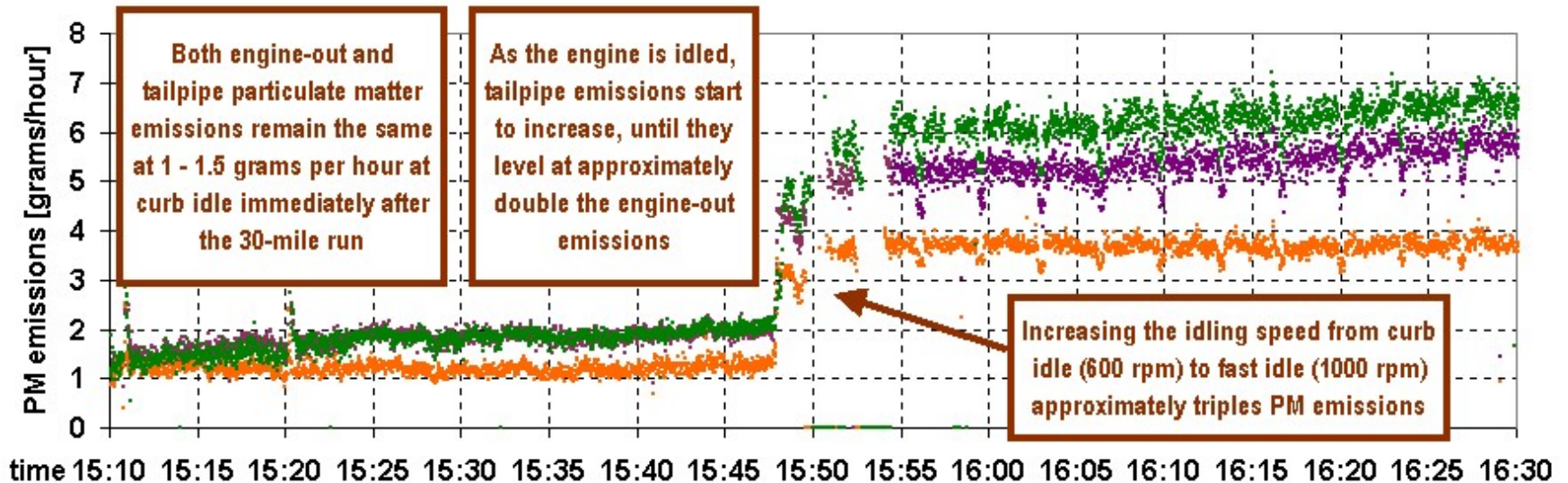
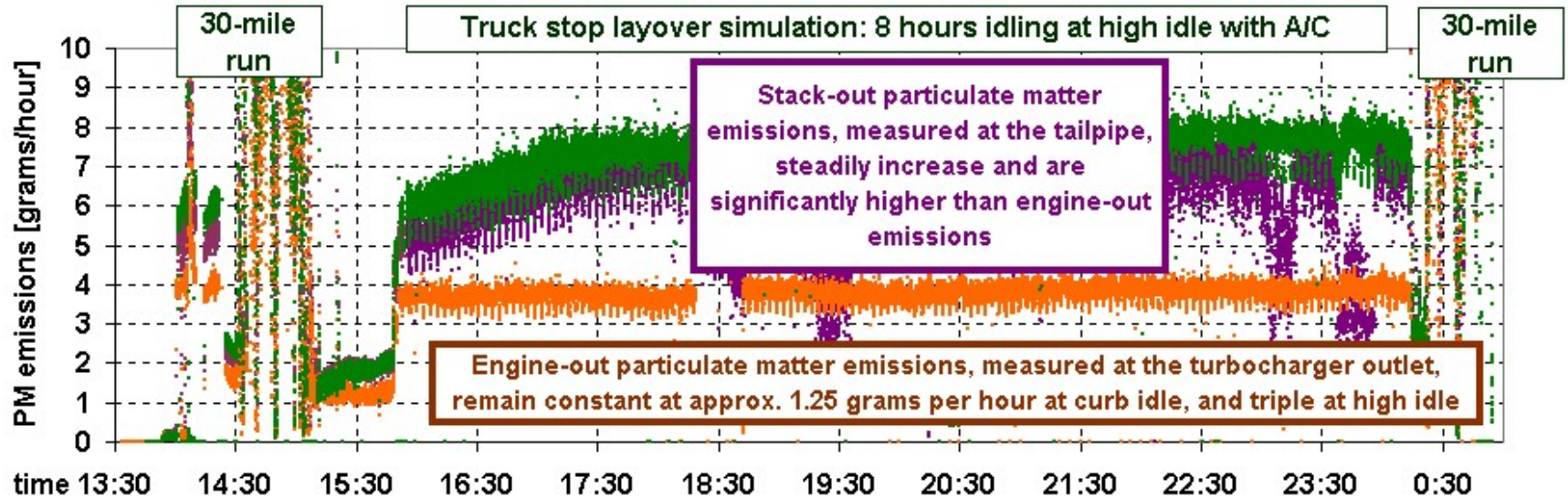
Most pronounced

- during and following idle and low loads
- with long exhaust systems
- with high aerosol fraction of PM

Must be differentiated from the aftertreatment device effects

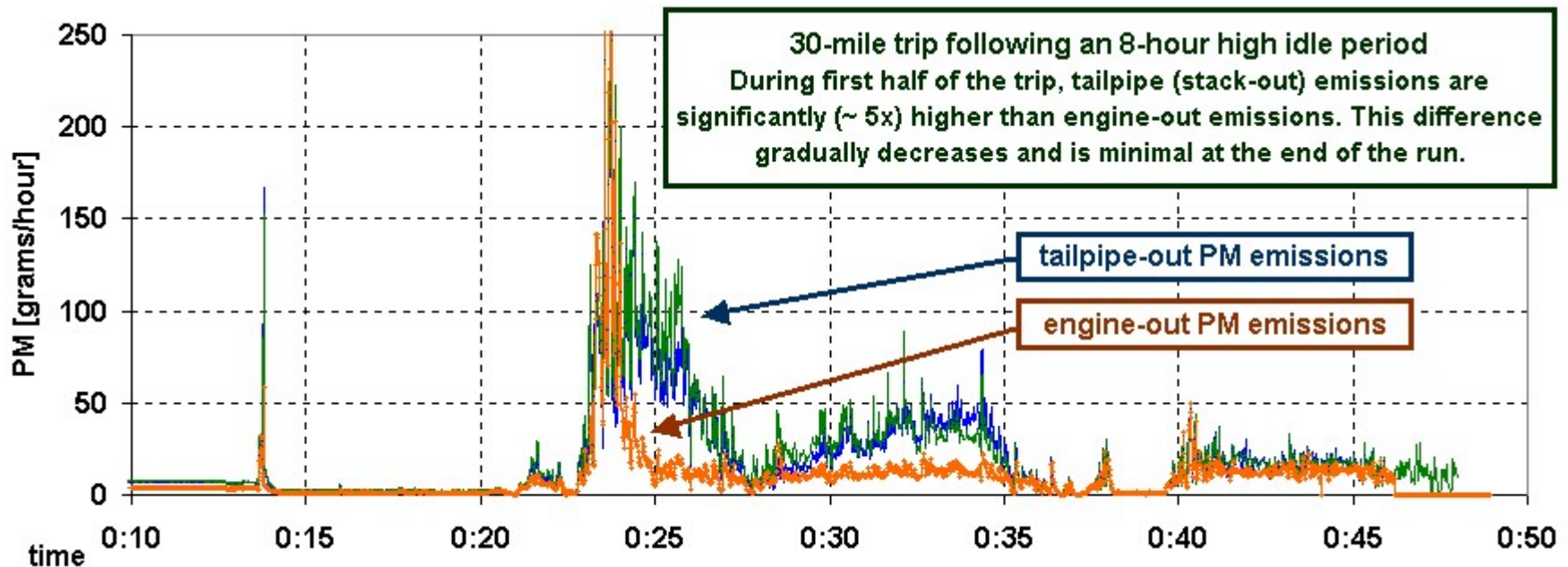
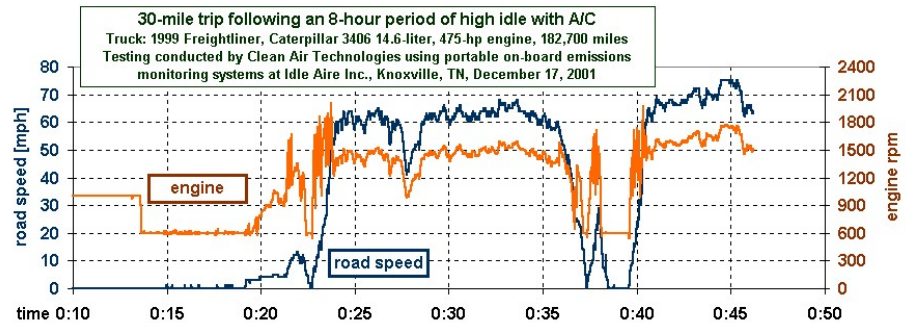
Effect of prolonged idling on PM emissions

1999 Freightliner truck, CAT 3406 engine, ~150,000 miles 8-hour extended idling test Idle Air Technologies, Knoxville, TN, December 17, 2001



Effect of prolonged idling on emissions during subsequent driving

- Class 8 truck idled for 8 hours at high idle, then driven for ~32 miles on an interstate highway
- PM emissions were sampled at the turbocharger outlet (engine-out) and at each stack (tailpipe) using three portable, on-board systems

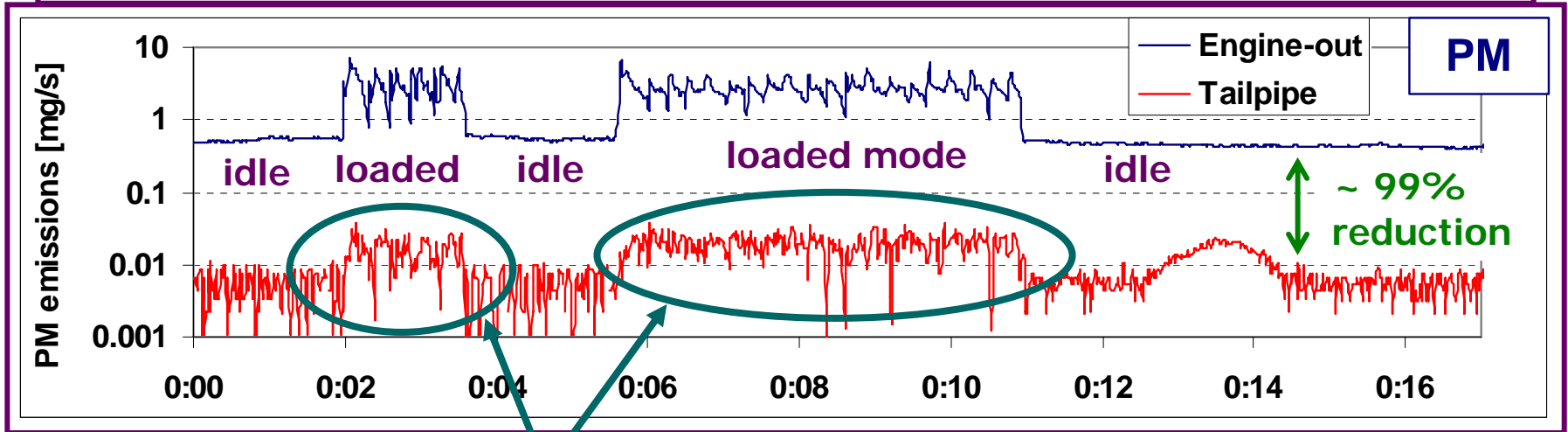


1999 Freightliner truck, CAT 3406 engine, ~150,000 miles 8-hour extended idling test Idle Aire Technologies, Knoxville, TN, December 17, 2001

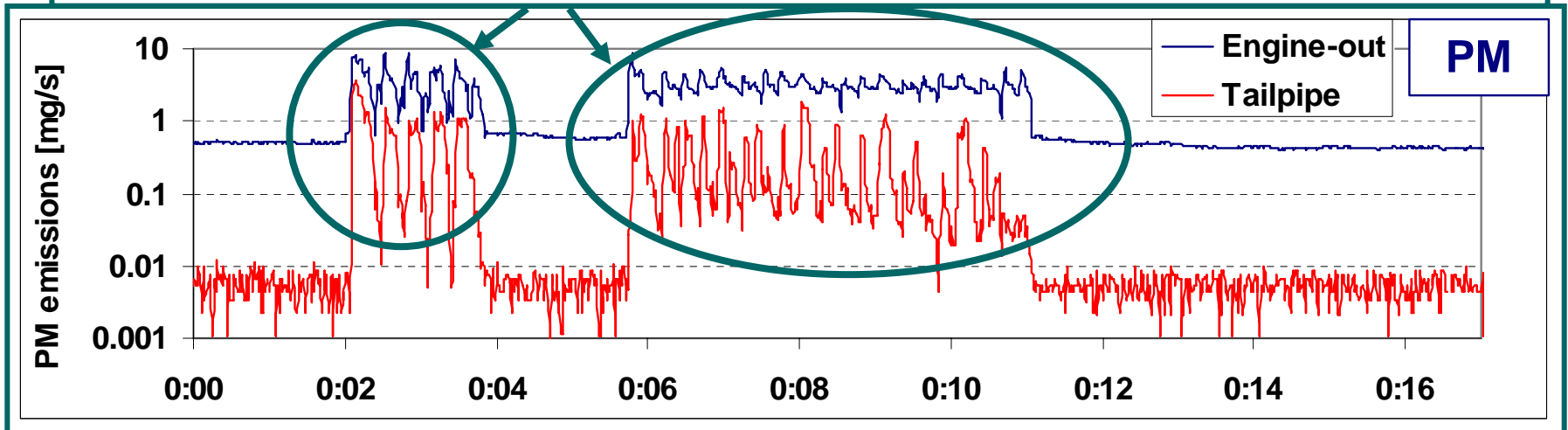
Field test – excavator with diesel particulate filter

Emissions measured simultaneously upstream & downstream of DPF during a field test designed to mimic real-world operation

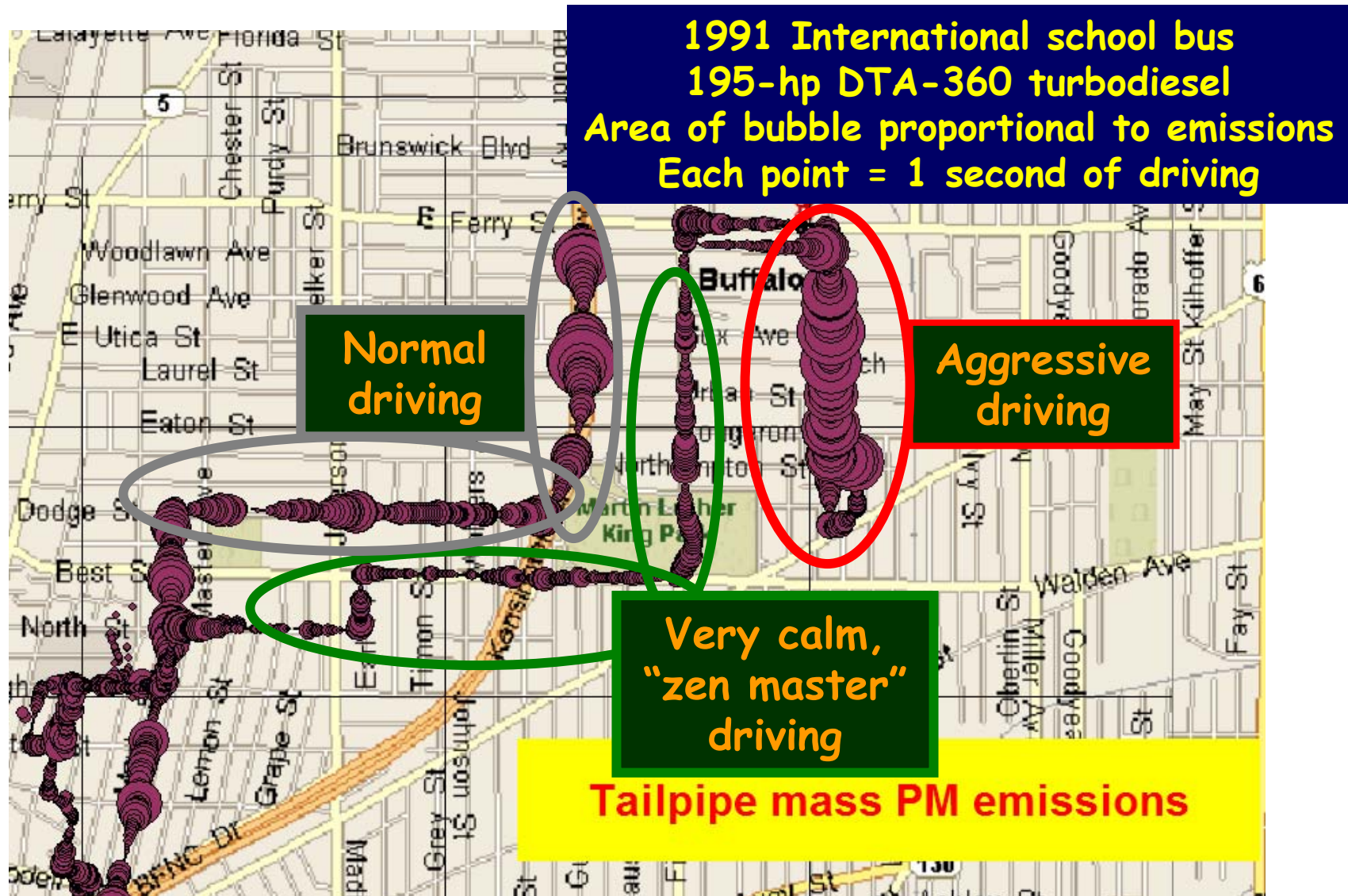
Typical test run, construction equipment with diesel particulate trap



Test run after prolonged idling: Elevated PM during high load operation



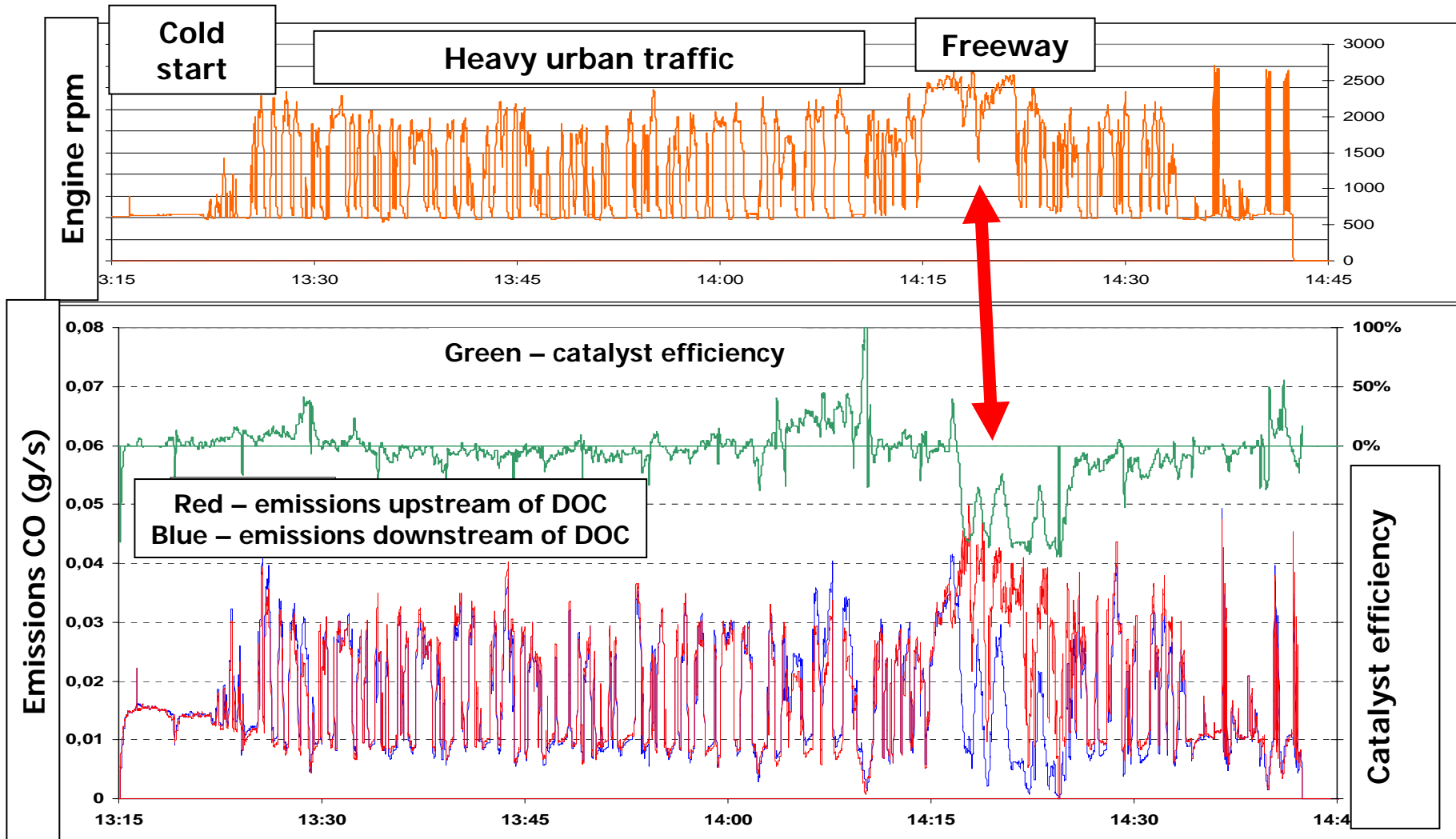
Example: Effect of driving style on particulate matter emissions



Source: Author data, personal research

Crude evaluation of overall diesel oxidation catalyst function by CO measurements

Extreme case: Bus catalyst operational only during sustained high load operation
Measurement is far from accurate (repair-grade analyzer used), but useful for the purpose.



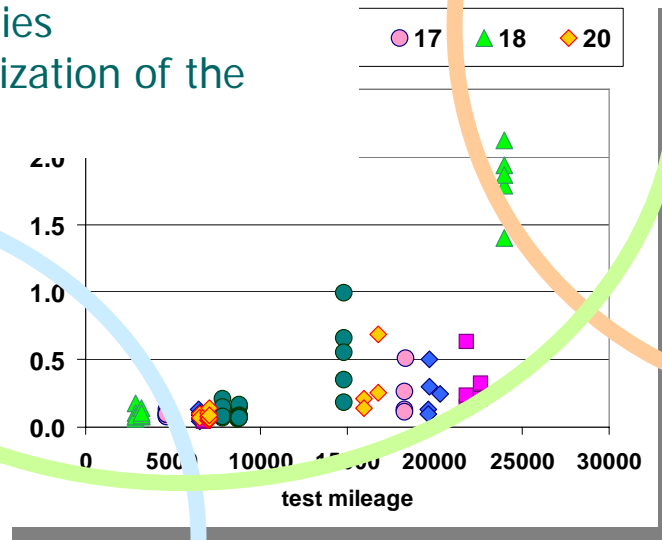
Discussion – PM sampling, PM measurement using light scattering

- Dilution at the sampling port upstream of aftertreatment adds to the complexity of the system
- No dilution, no heating of the sampling system – secondary growth of PM in the sampling system, plus condensation of water vapor contained in the exhaust on particles
- Low concentration – counting of individual particles possible but generally not possible without dilution
- High concentration – “aggregate” number but some size information can be obtained with very fast sampling
- Response $\sim d^6$ for particles \ll wavelength of light
- Response $\sim d^2$ for particles \gg wavelength of light
- Response $\sim d^0$ if particles grown to uniform size
- For soot, mass $\sim d^{fd}$, where fd = fractal dimension of particles
- Complexity of issues requires careful use and thoughtful, application-specific calibration with other methods; still, results might not be accurate

Discussion – accuracy of on-road measurements

On-road testing
Wide intermediate area
Development and pilot deployment of new technologies
Characterization of the effects

Inspection programs
High-volume, fast, low-cost field testing
Goal is to identify high emitters (order-of-magnitude deviations)



Basic + applied research
Low-volume laboratory testing
Can be costly and complex
Goal: Laboratory quality data

Accuracy and other parameters of on-board test equipment and methods need to be carefully matched to the needs of the application.

Crude evaluation of overall particulate trap function by visual inspection



Visible soot: Signs of mechanical problem



**No visible traces of soot =
Trap function probably OK**

Conclusions

- Aftertreatment device evaluation requires, after initial development but before mass deployment, testing of a large set of vehicles under a variety of conditions; such testing can be done on the road
- Studies done using a simple on-board system show that repeatable measurements can be obtained by replicating dynamometer driving cycles on a closed road; tests can be then done alternately with and without the aftertreatment device
- Ordinary operation (i.e., of a vehicle on the road) is generally poorly repeatable; in this case, measurements can be done by simultaneous sampling upstream and downstream of the aftertreatment device
- Studies done using a simple on-board system show that errors due to non-isokinetic sampling upstream of the device appear to be relatively small (compared to other sources of error)
- **Simultaneous emissions measurements upstream and downstream of an aftertreatment device appear to be a feasible way of evaluating its efficiency in real-world operation.**